



Natural Gas Winter Fundamentals & Outlook

Wednesday, 9 November 2022



Today's speakers

Tina Hoang – Account Manager, ICE - Moderator

David Margolin - Meteorologist, ICE

James Bevan - Vice President of Research, Vice President of Operations, Criterion Research

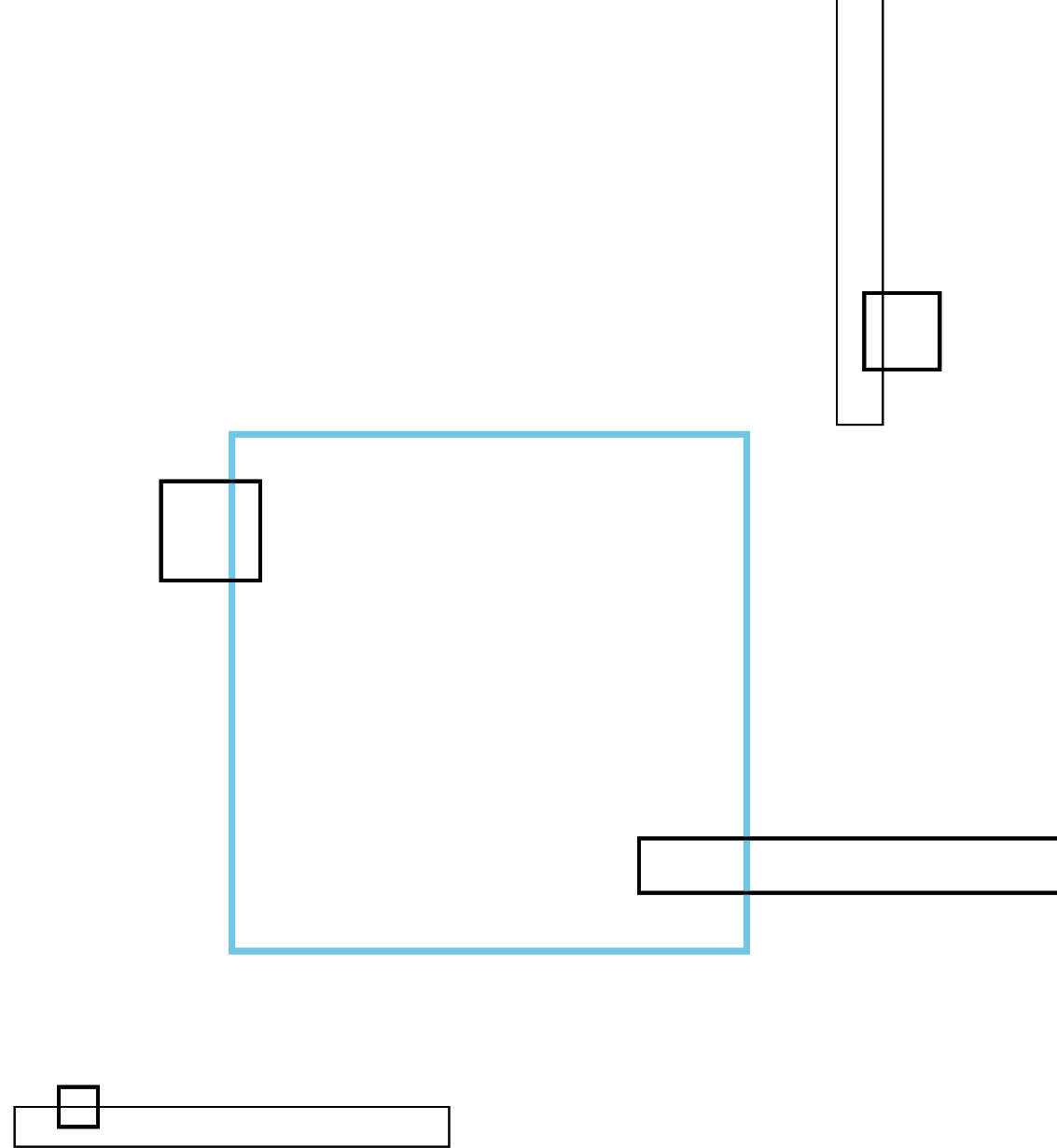
Agenda

- Welcome – Tina Hoang
- 2022-23 Winter Weather Outlook
- Natural Gas Supply & Demand Fundamentals
- Q&A

ICE Weather Data & Analytics

David Margolin

Meteorologist, ICE



An Overview of ICE Data Services Desktop Solutions to help Evaluate the Risks and Impacts of Weather on the Energy Markets

Model Guidance:

- SEAS
- CFS

Historical Data:

- Evaluate Trends

Performance Tools:

- Progression/Volatility Tool for evaluating real-time model performance

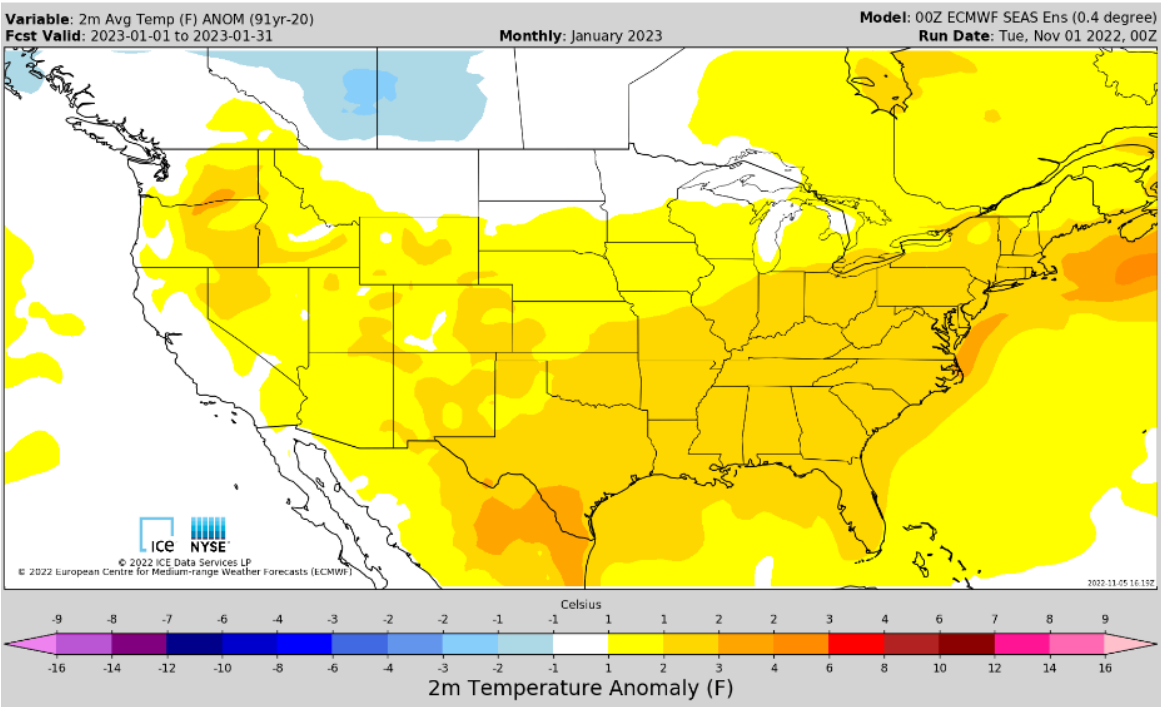
Includes both weather and market data:

- Evaluate relationships between weather and price

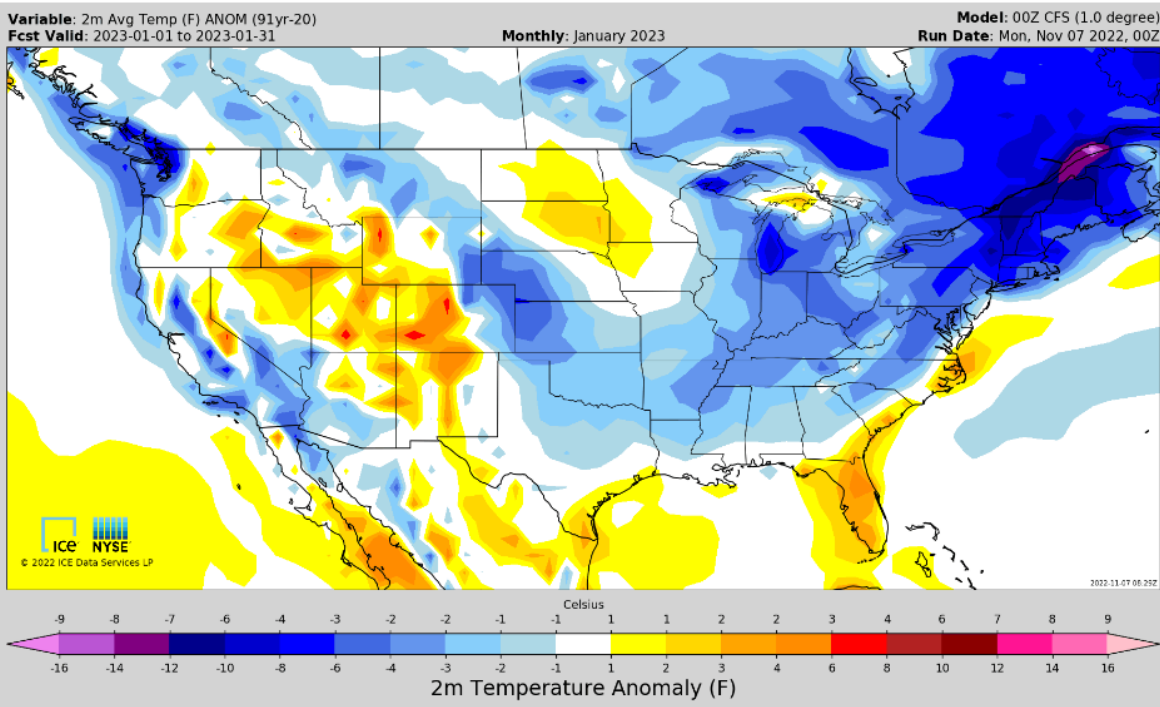
Long-Range Guidance: Maps

ICE Data Services offers temperature, precipitation, and upper-air month-ahead forecasts from NOAA and the ECMWF modeling centers

SEAS (ECMWF)



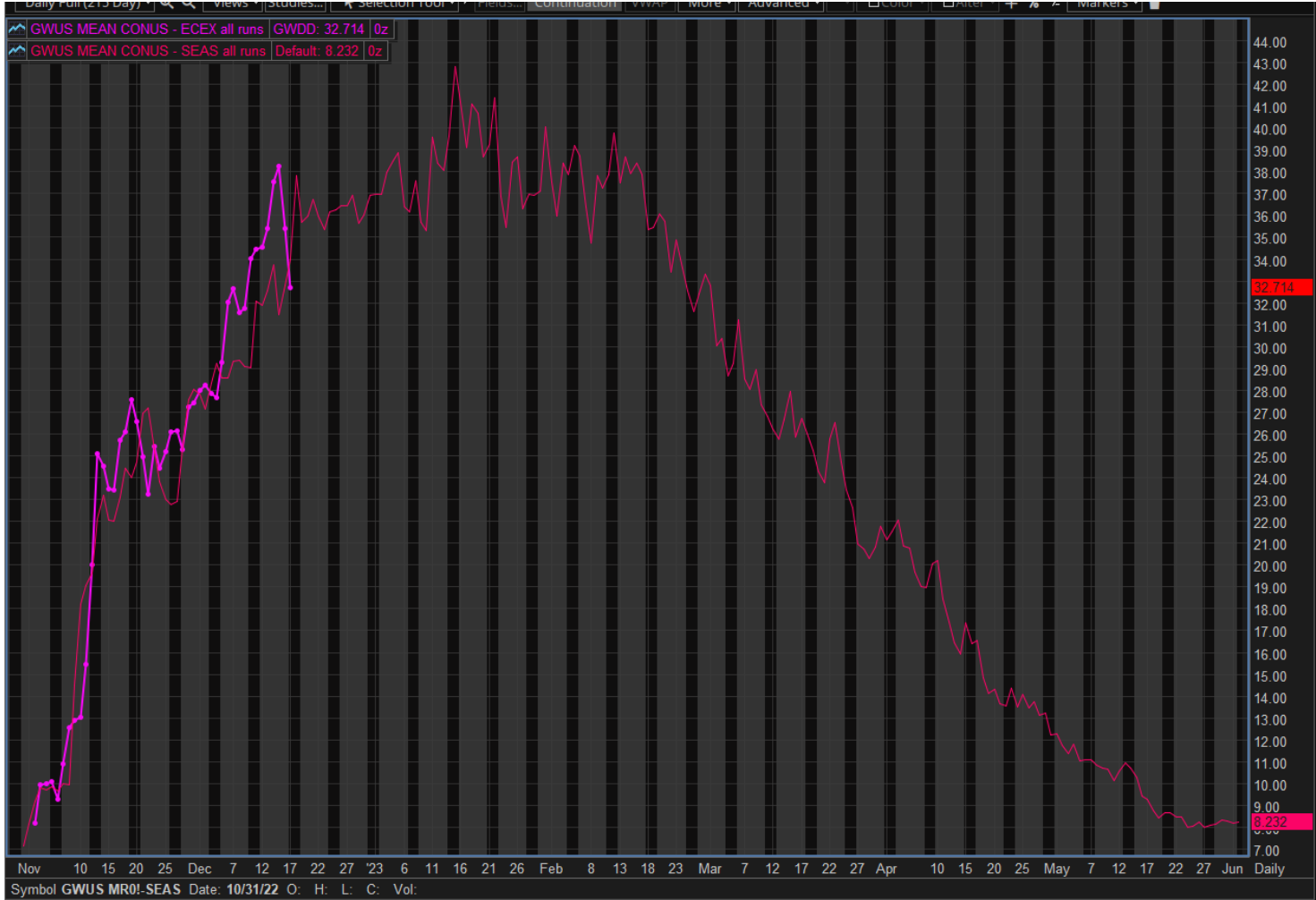
CFS (NOAA)



Source: ICE Connect, November 2022 - ICE Data, LP

Long-Range Guidance: Data

ICE Data Services offers temperature, precipitation, upper-air forecasts from NOAA's and ECMWF's modeling centers

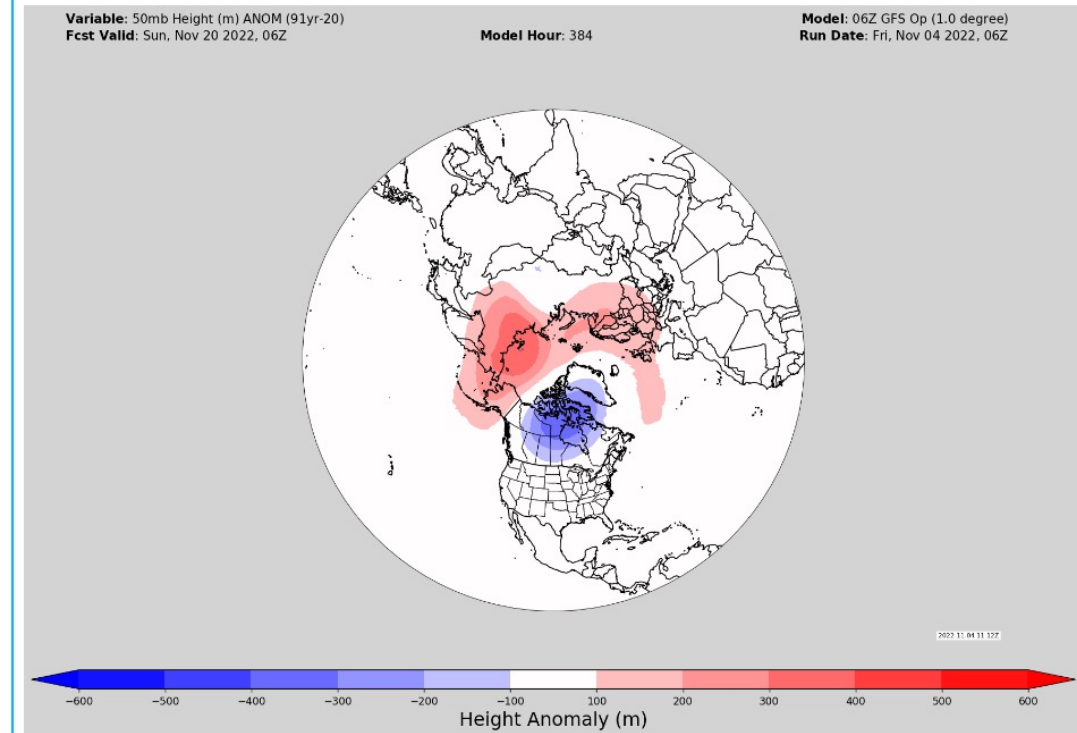
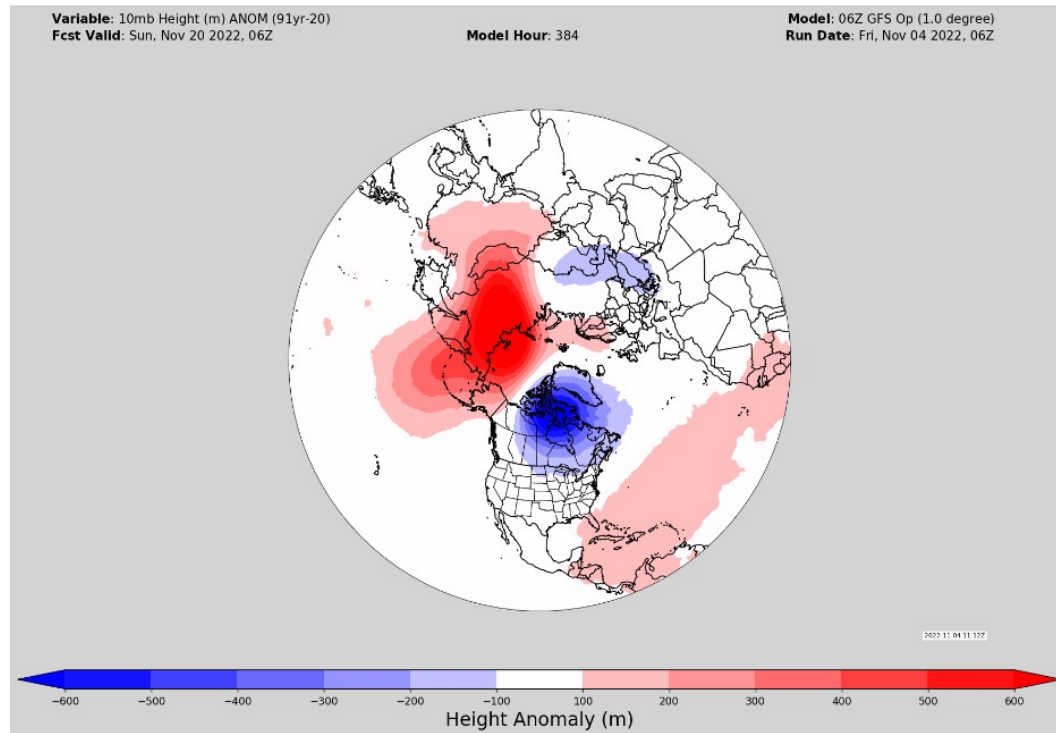


SEAS and ECEX model data for CONUS GWDDs



Model Guidance to Detect Pattern Signals that may Precede Major Cold and Warm Weather Regimes

ICE Data Services provides weather maps and data that is important to meteorologists for detecting the occurrence of 'Sudden Stratospheric Warmings' (SSW) and 'Sudden Stratospheric Coolings' (SSC). **Why is this important?** There is a substantial body of peer reviewed research showing a significant relationship with SSW/SSC events and long-duration periods of anomalous cold/warm 4-6 weeks later.



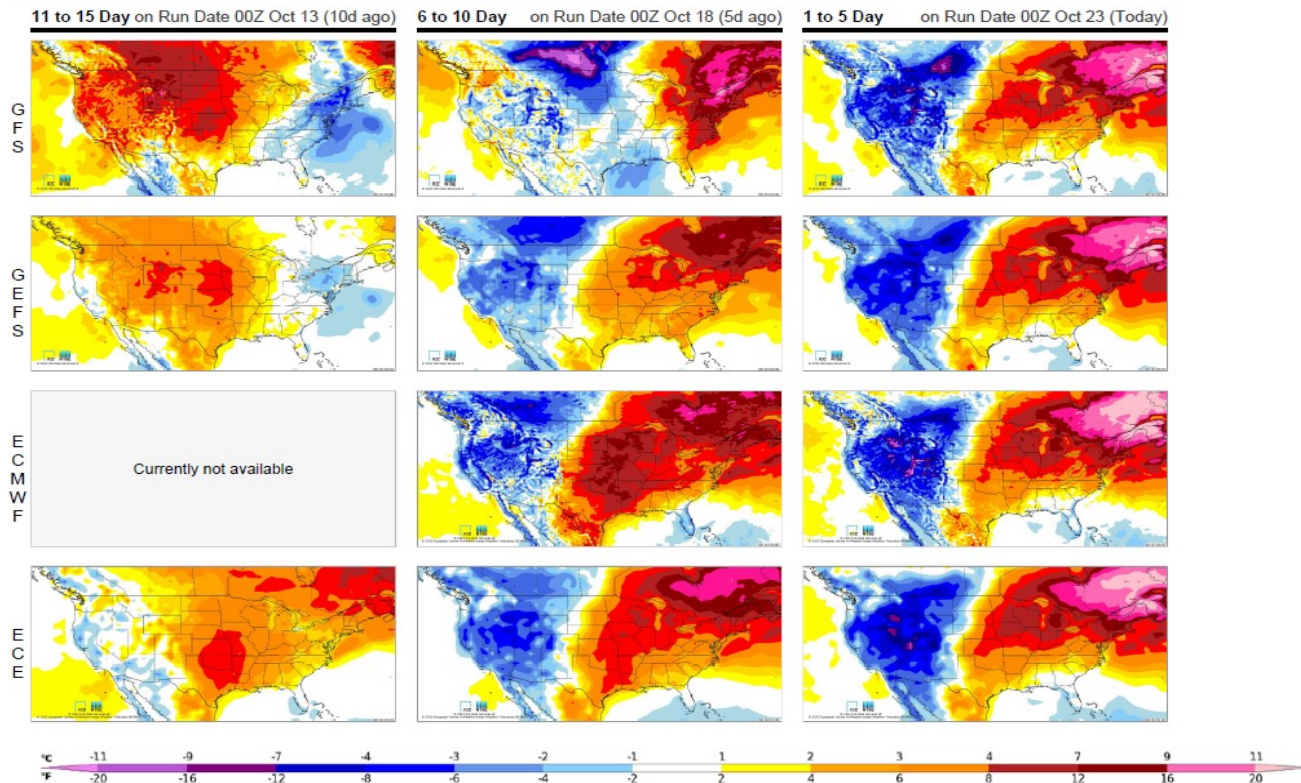
Data and Analytics to Study Weather Model Performance

ICE Data Services Desktop solutions offers volatility/performance tools for evaluating weather model performance and the potential for changes in the data.

ICE Weather Newsletter
Sunday, October 23, 2022

Target Window: Today's 00Z 5 day period valid Oct 23 to Oct 27¹

Section #4 : PROGRESSION



We call this the 'Progression View' as it provides real-time information on how models are performing even before they verify.

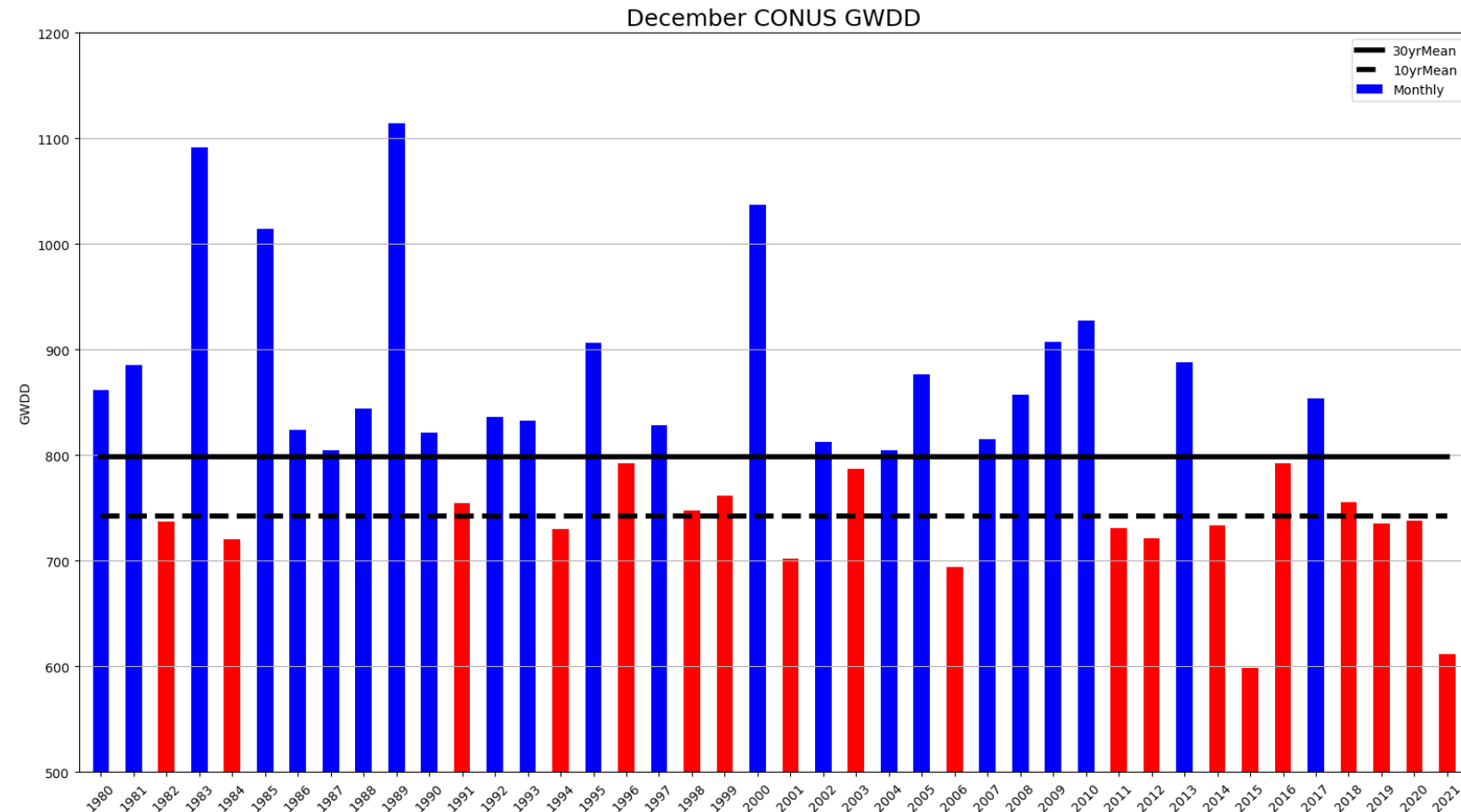
What are the takeaways in today's Progression View (comparing the GEFS and ECE only)?

- The ECE performed better in identifying the anomalous warmth in the East from the 11 to 15 day period. In fact, the GEFS was showing Normal to Below Normal anomalies for locations that generally verified Above to Much Above Normal.
- By the 6 to 10 day period both the GEFS and ECE had generally picked up and resolved well the coverage and intensity of anomalous warmth for the East (along with the anomalous cold in the West)

Source: ICE Chat Daily Newsletter, November 2022 - ICE LP

Data and Analytics to Study Climate Trends

ICE Data Services offers multiple historical data sources (CFSR and METAR) that are helpful in evaluating the impacts of climate change and other atmospheric oscillations on US Winter Weather.



Blue Bars represent December GWDDs above (or colder) the 30yr Mean

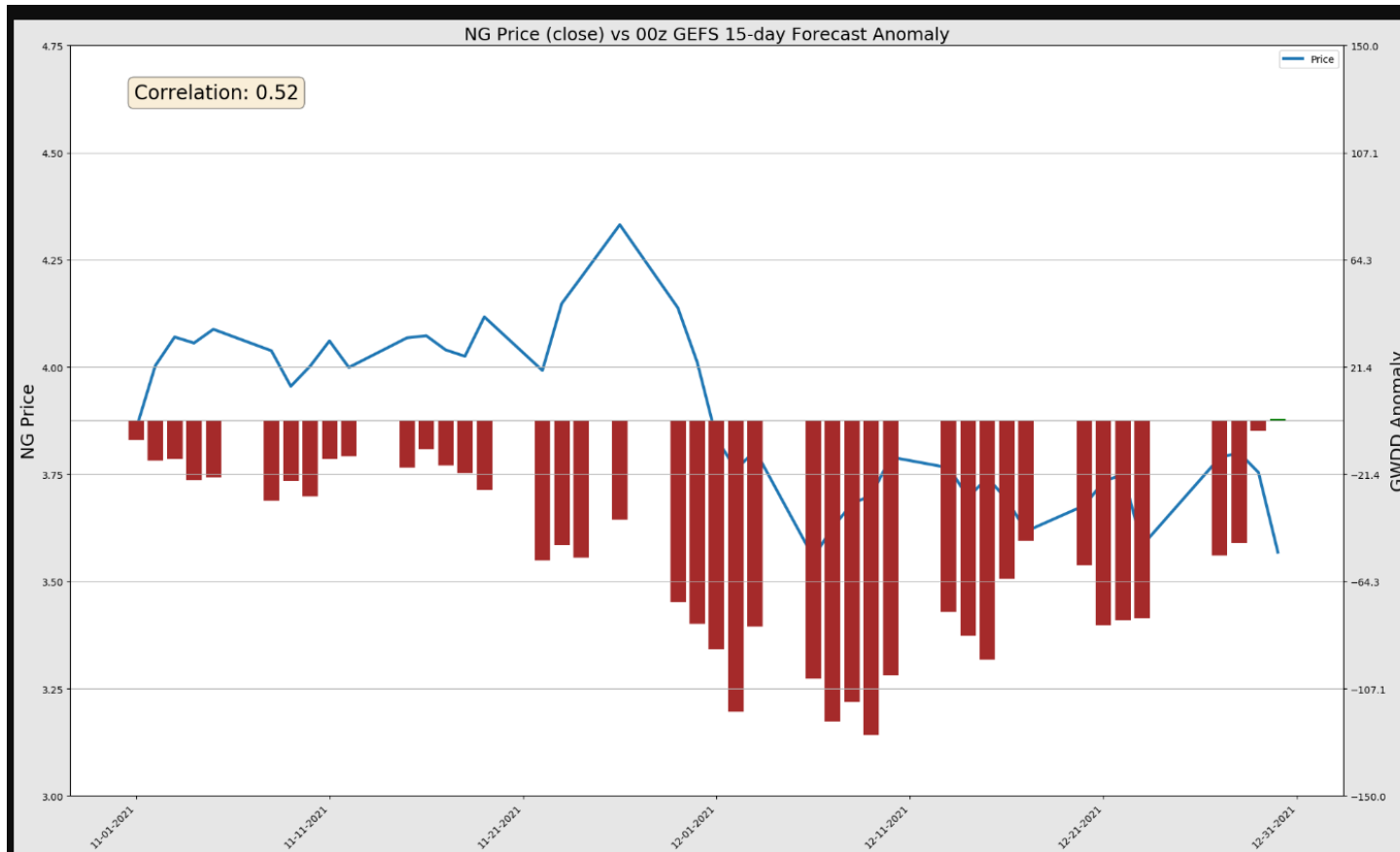
Red Bars represent December GWDDs below (or warmer) the 30yr Mean

Quick Takeaways:

- 8 of the past 10 Decembers are warmer than normal
- 2 of the warmest Decembers on record (since 1980) occurred in the past 10 years

Data and Analytics to Study the relationship between Weather and Price

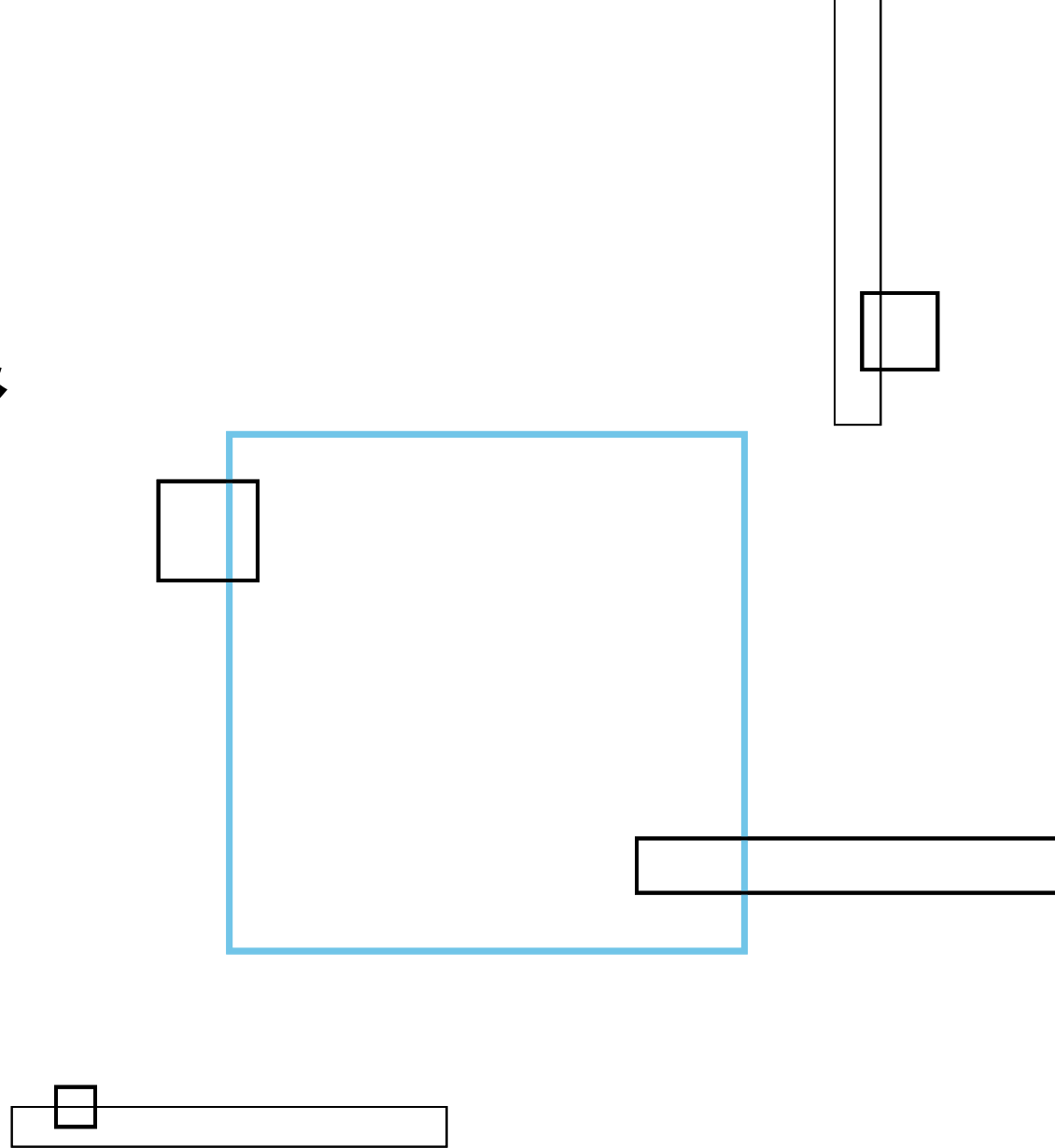
ICE Data Services is provider for weather and price data and analytics. In this example (utilizing the ICE Python API) we evaluate last winter's (2021-22) early season relationship between the Natural Gas market and the GEFS CONUS GWDD 15-day forecast.



Natural Gas Supply & Demand Fundamentals

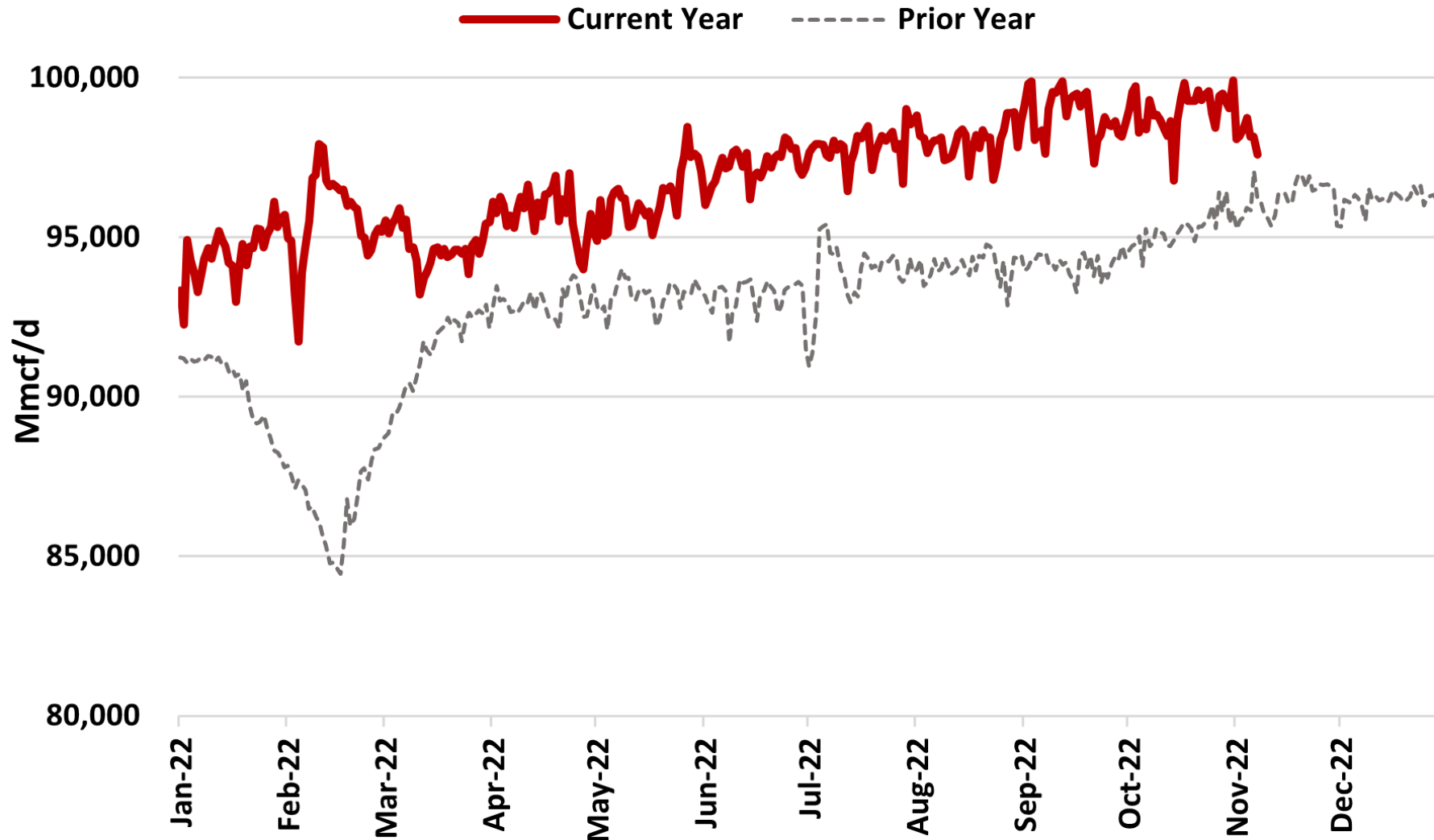
James Bevan

Vice President of Research,
Vice President of Operations,
Criterion Research



Lower 48 Natural Gas Production

Criterion Data via ICE RTD

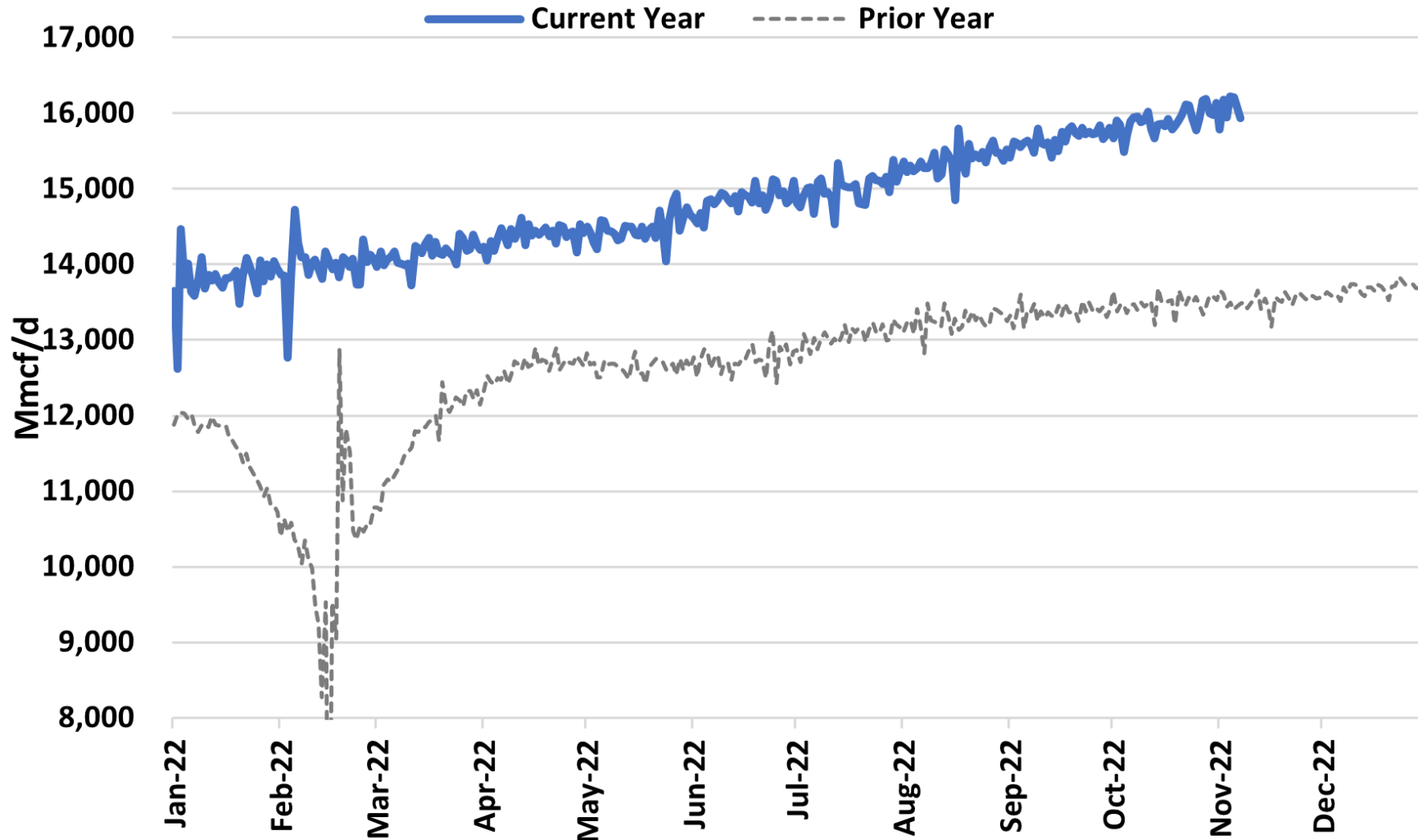


ICE Ticker: *FSDS.NGPR.L48.SUM.A-CRIT*

Source: Criterion Research, LLC

Permian Basin Natural Gas Production

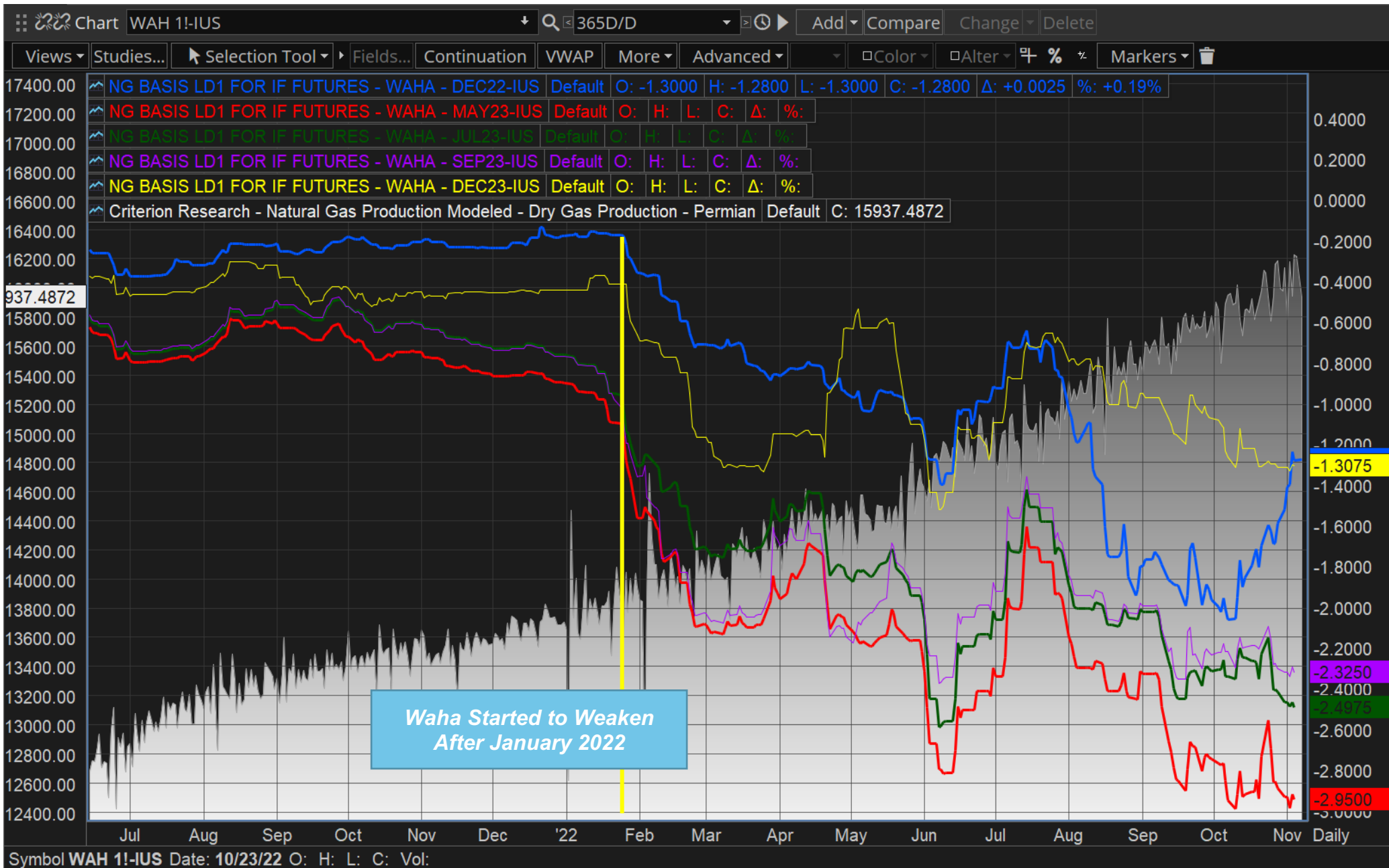
Criterion Data via ICE RTD



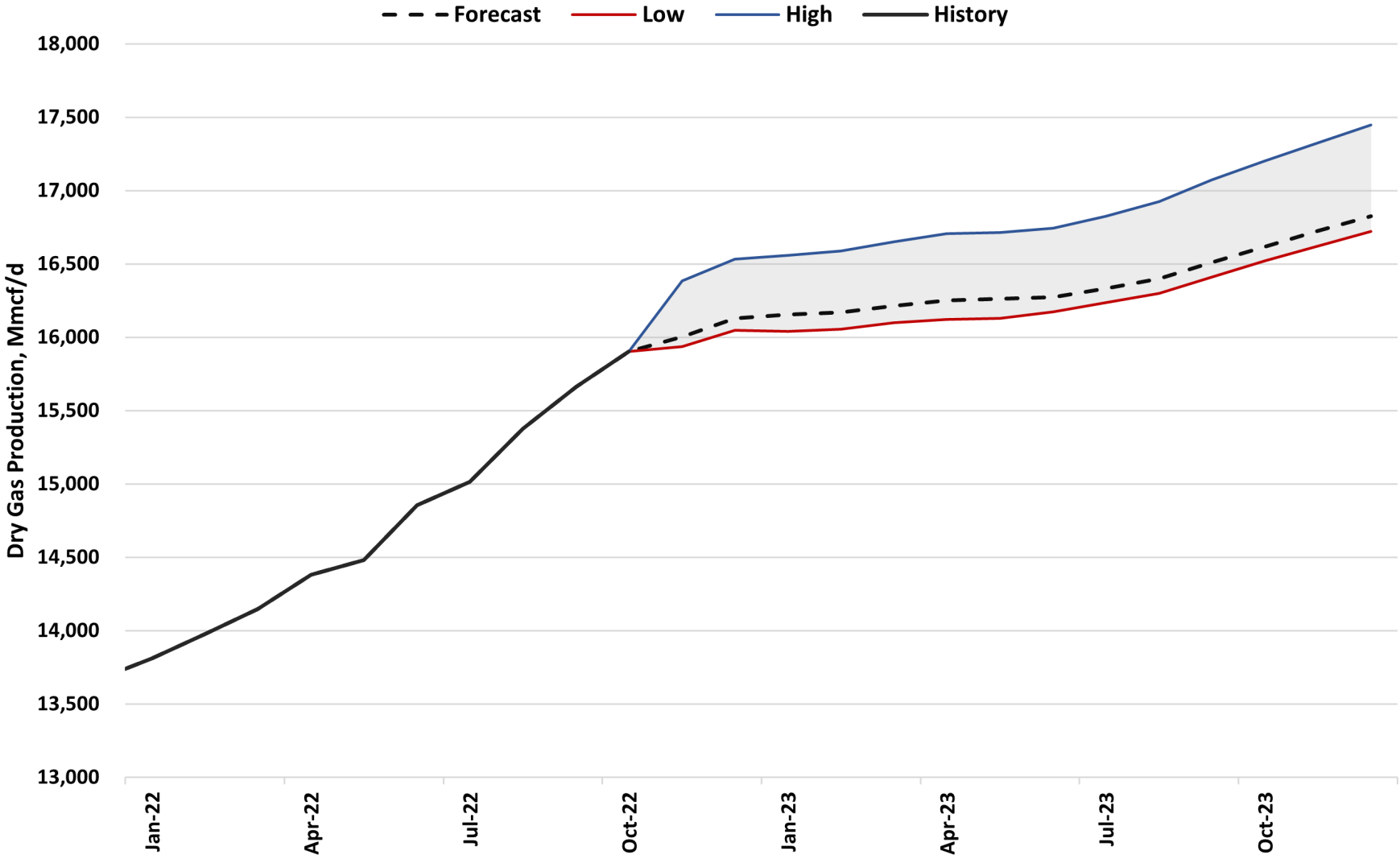
ICE Ticker: *FDSD.NGPR.SC.PERM.A-CRIT*

Source: Criterion Research, LLC



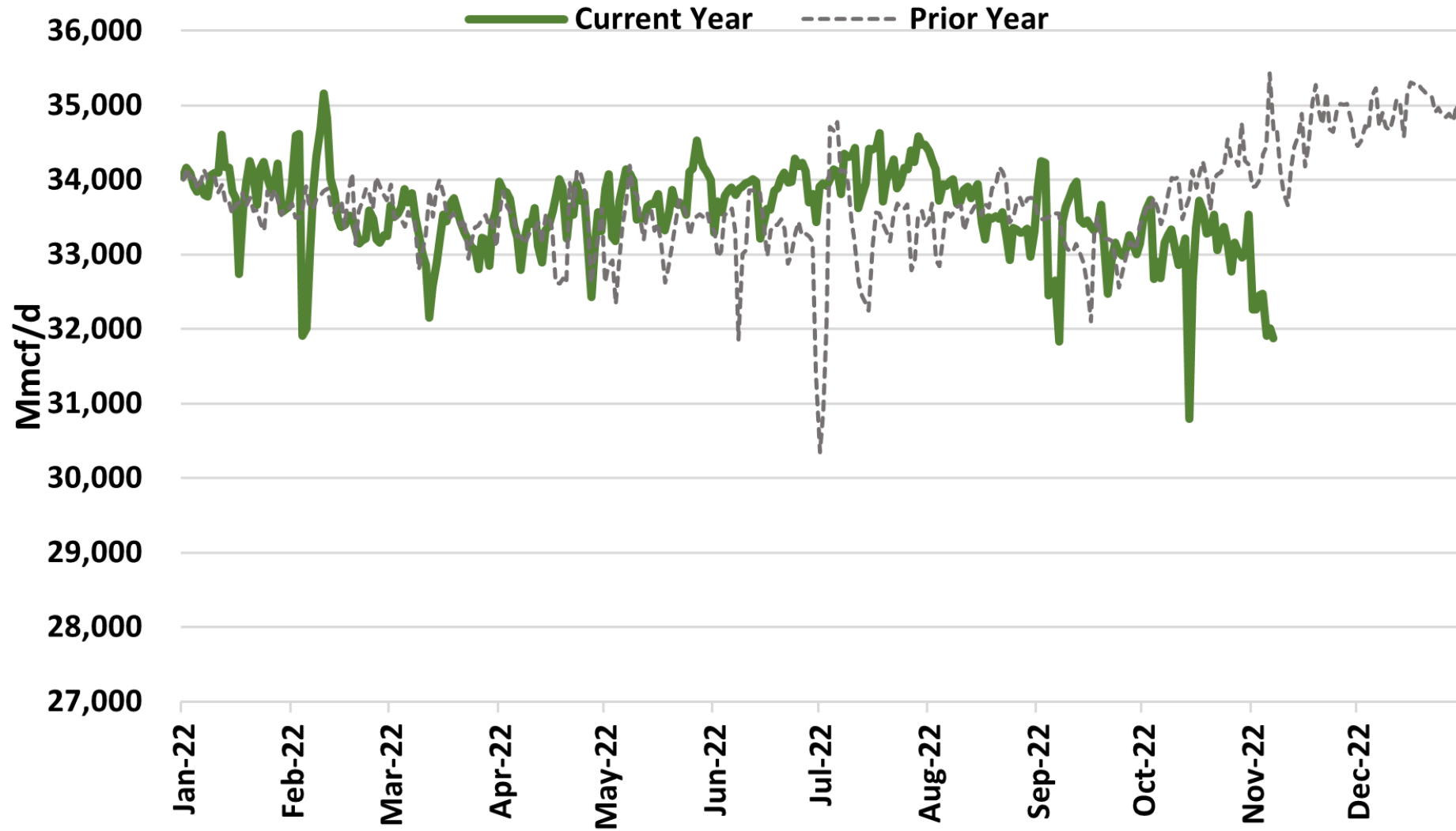


Criterion Research Permian Basin Production Outlook



Appalachian Natural Gas Production

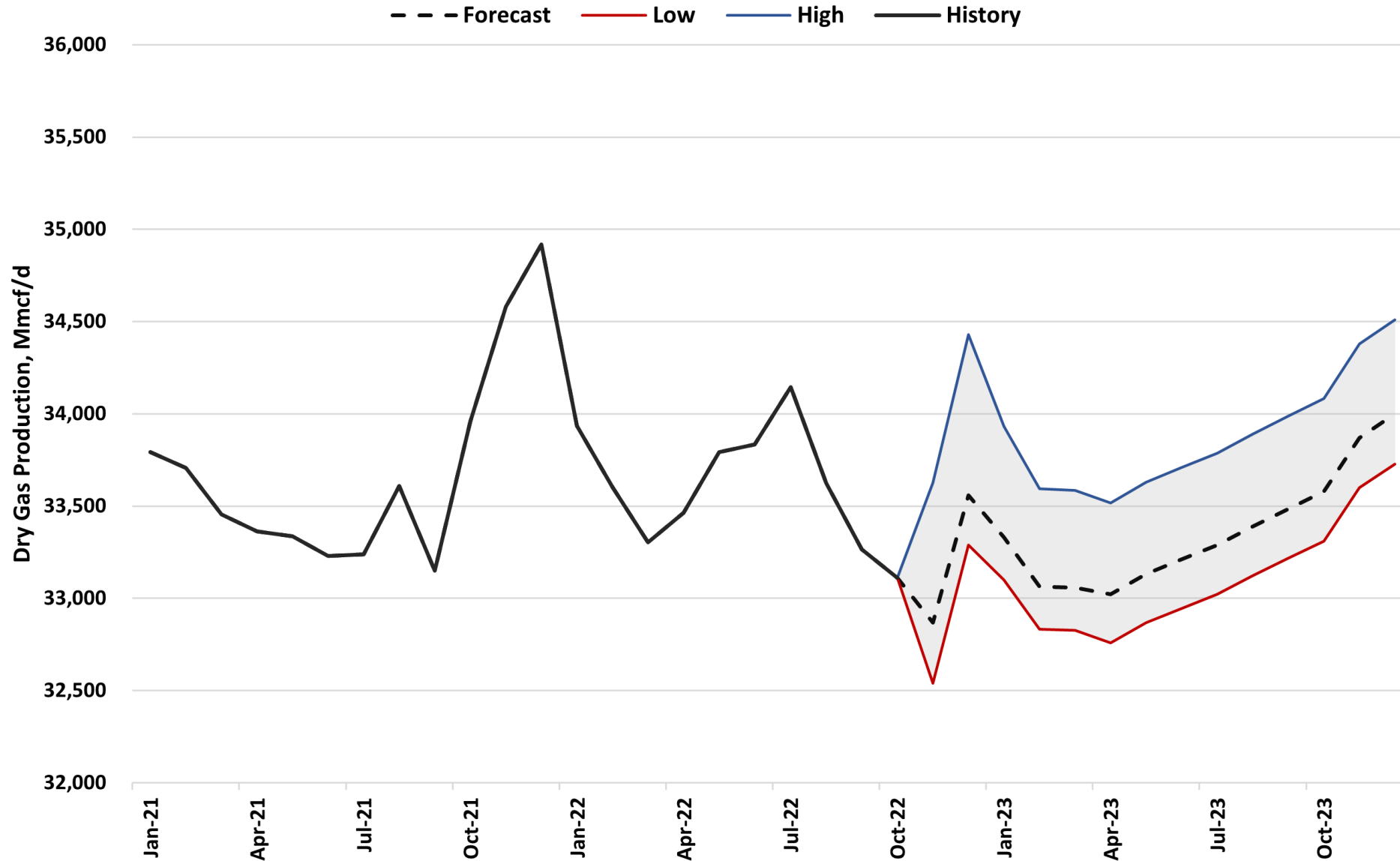
Criterion Data via ICE RTD



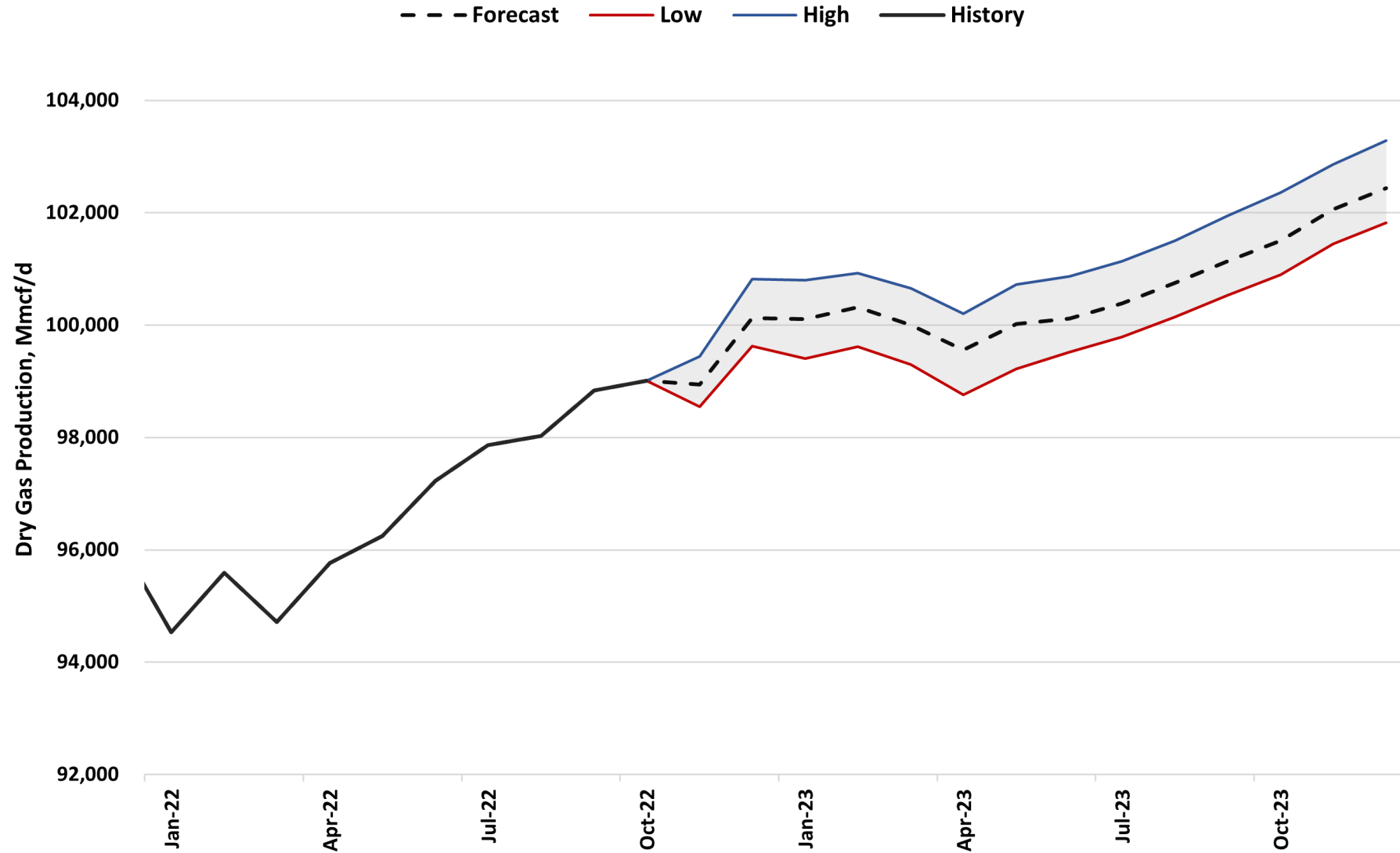
ICE Ticker: *FDSD.NGPR.NE.APP.A-CRIT*

Source: Criterion Research, LLC

Criterion Research Appalachian Production Outlook

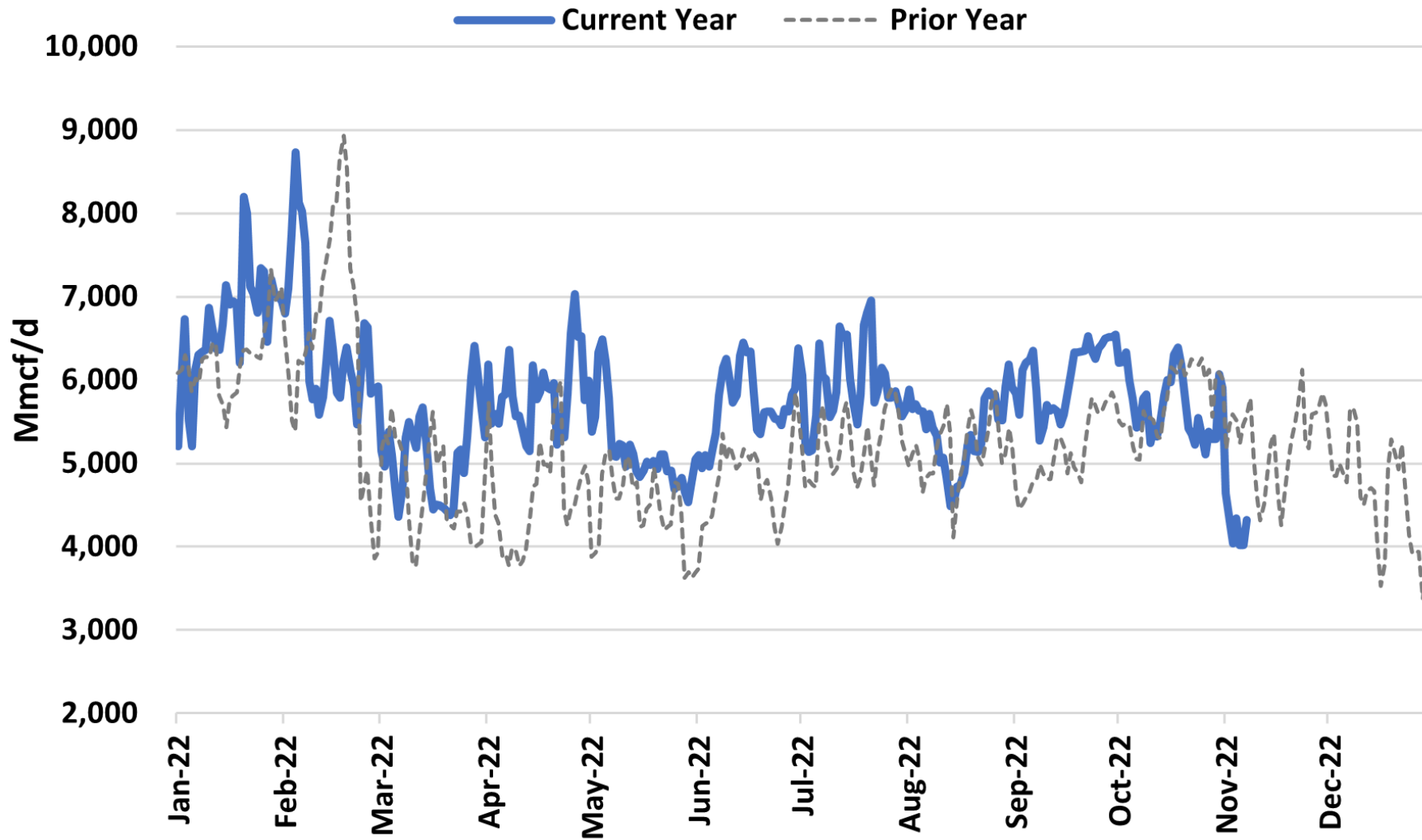


Criterion Research Lower 48 Natural Gas Production Outlook



Net Canadian Natural Gas Imports to United States

Criterion Data via ICE RTD

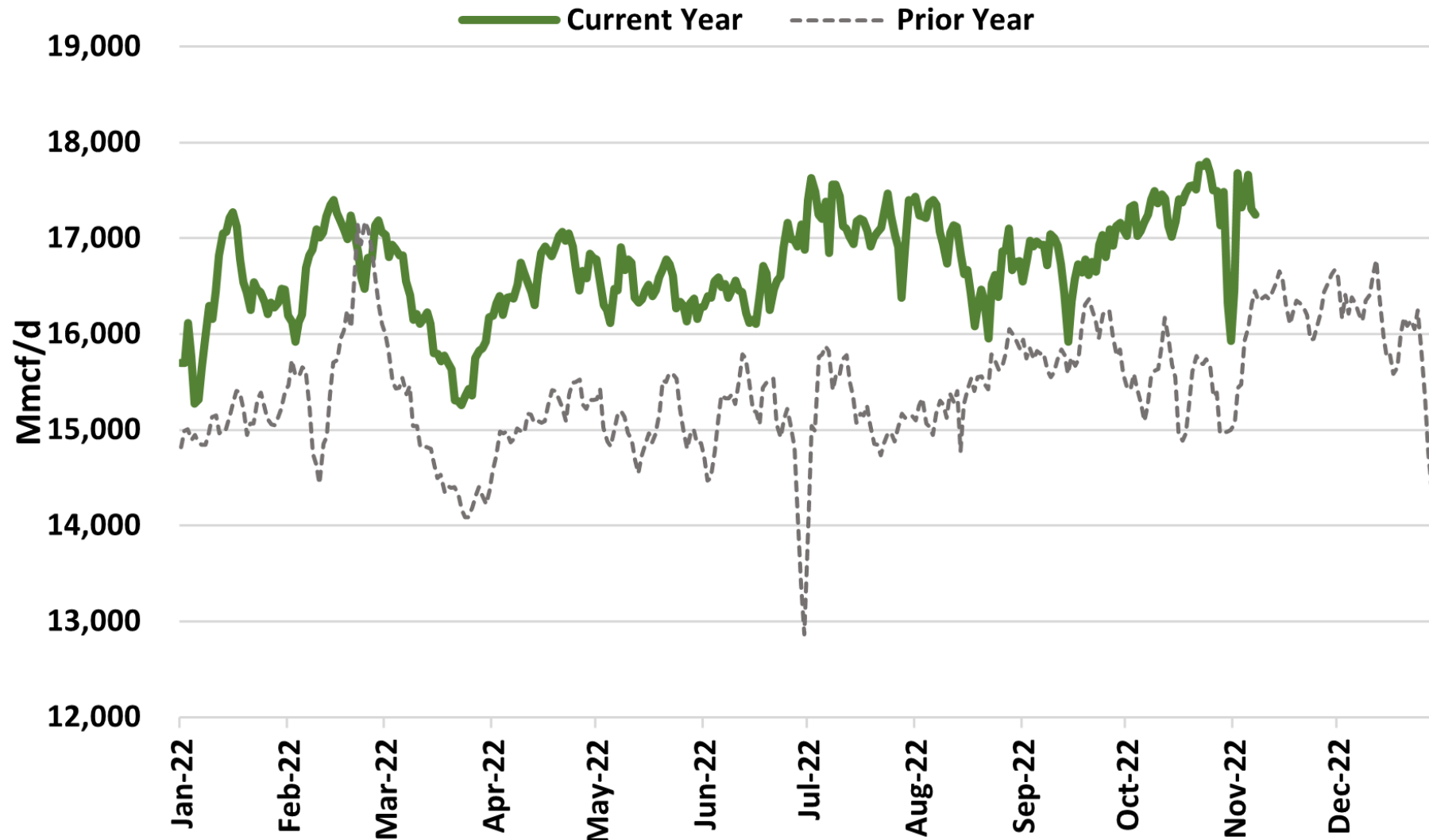


ICE Tickers: *PLAG.CN2US.SUM.NET.A-CRIT*

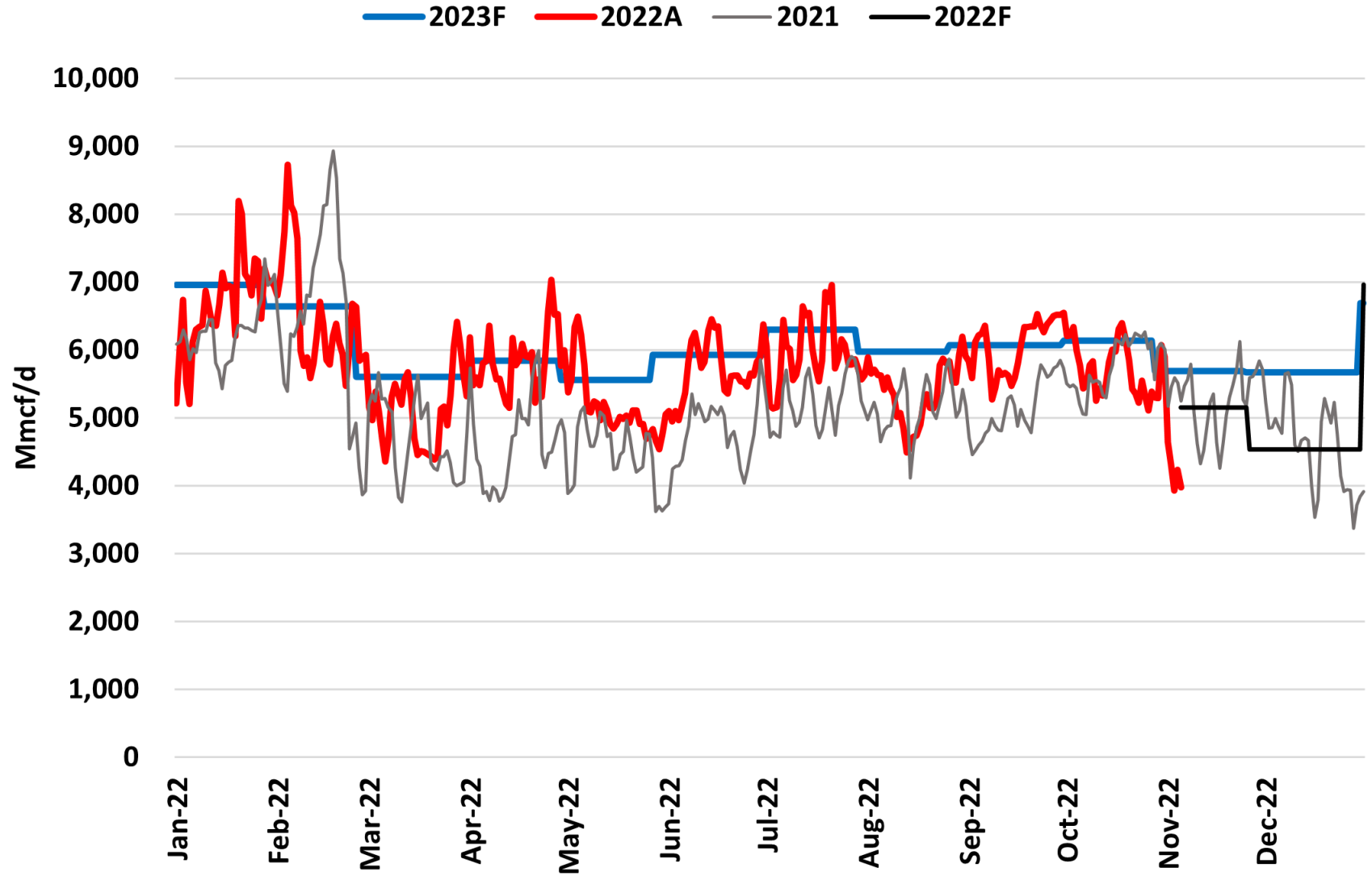
Source: Criterion Research, LLC

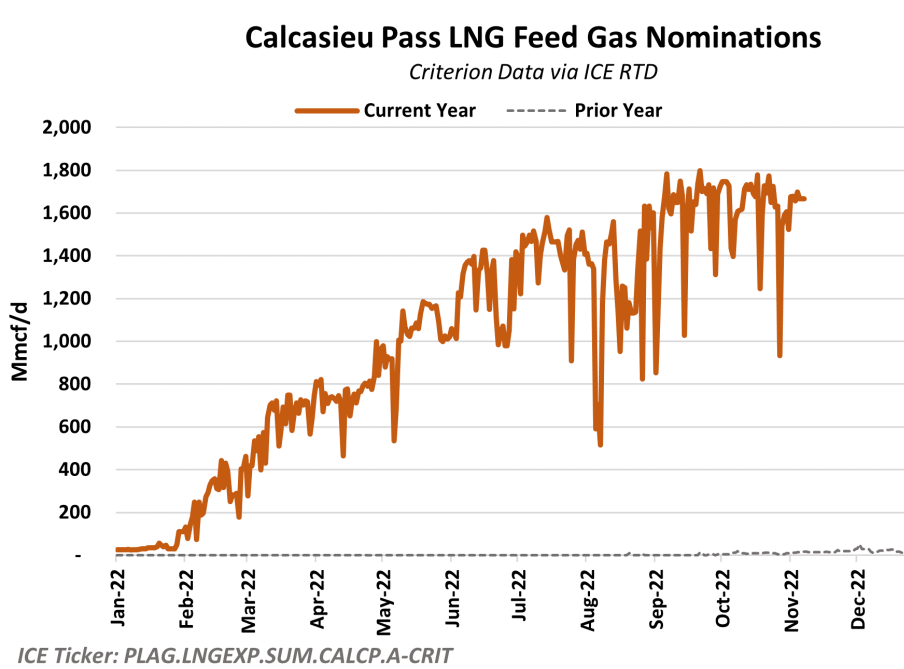
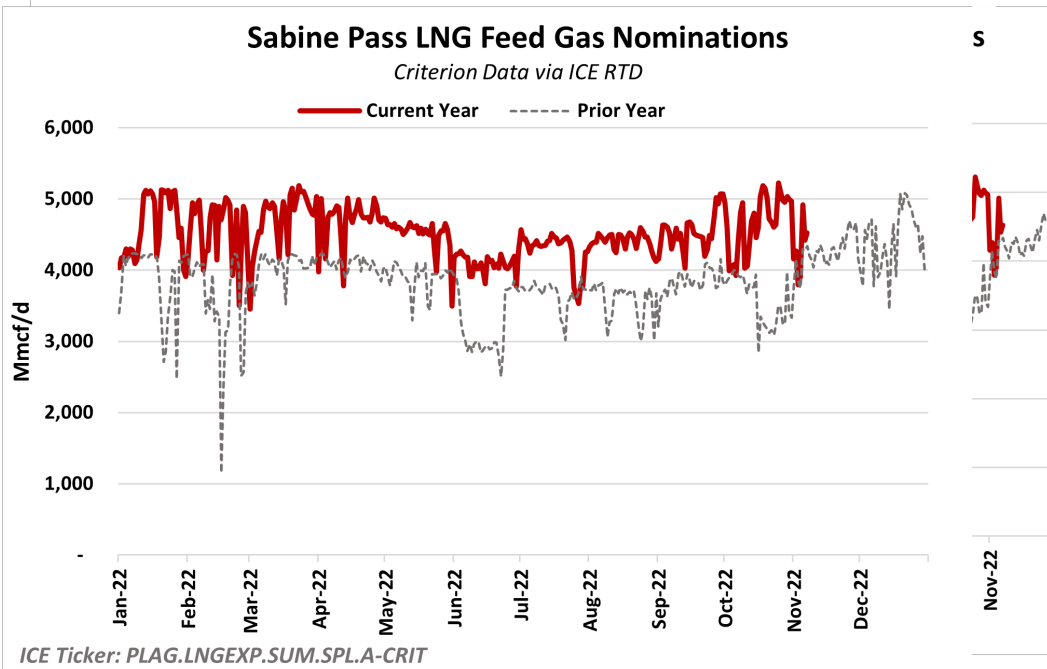
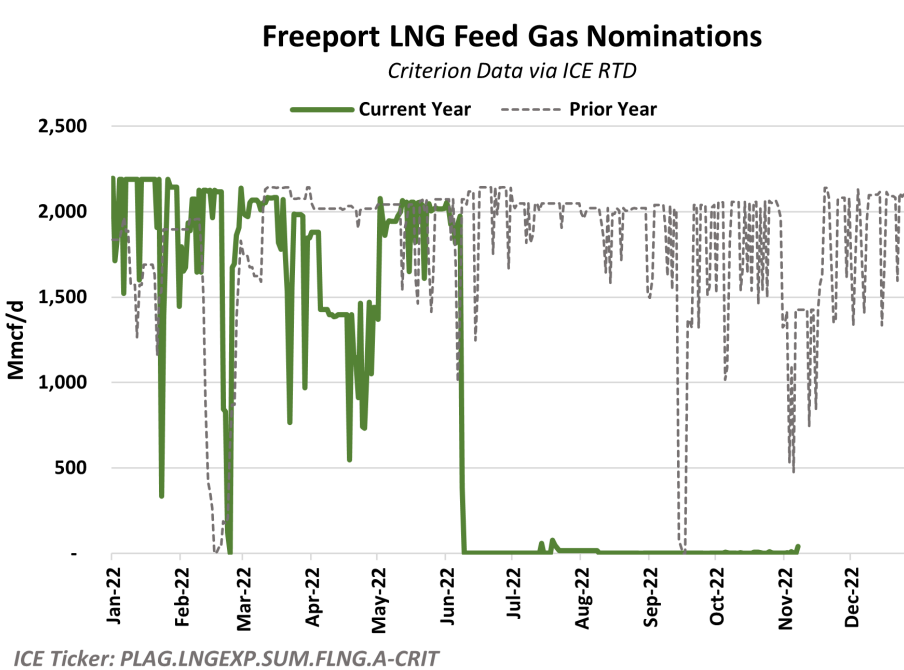
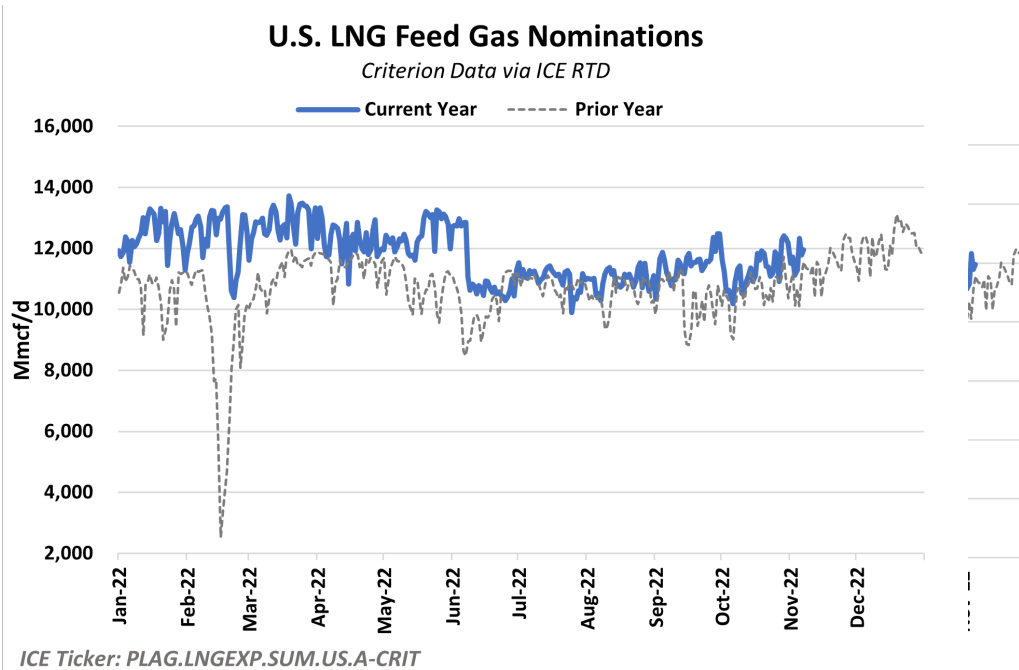
Canadian Natural Gas Production

Criterion Data via ICE RTD



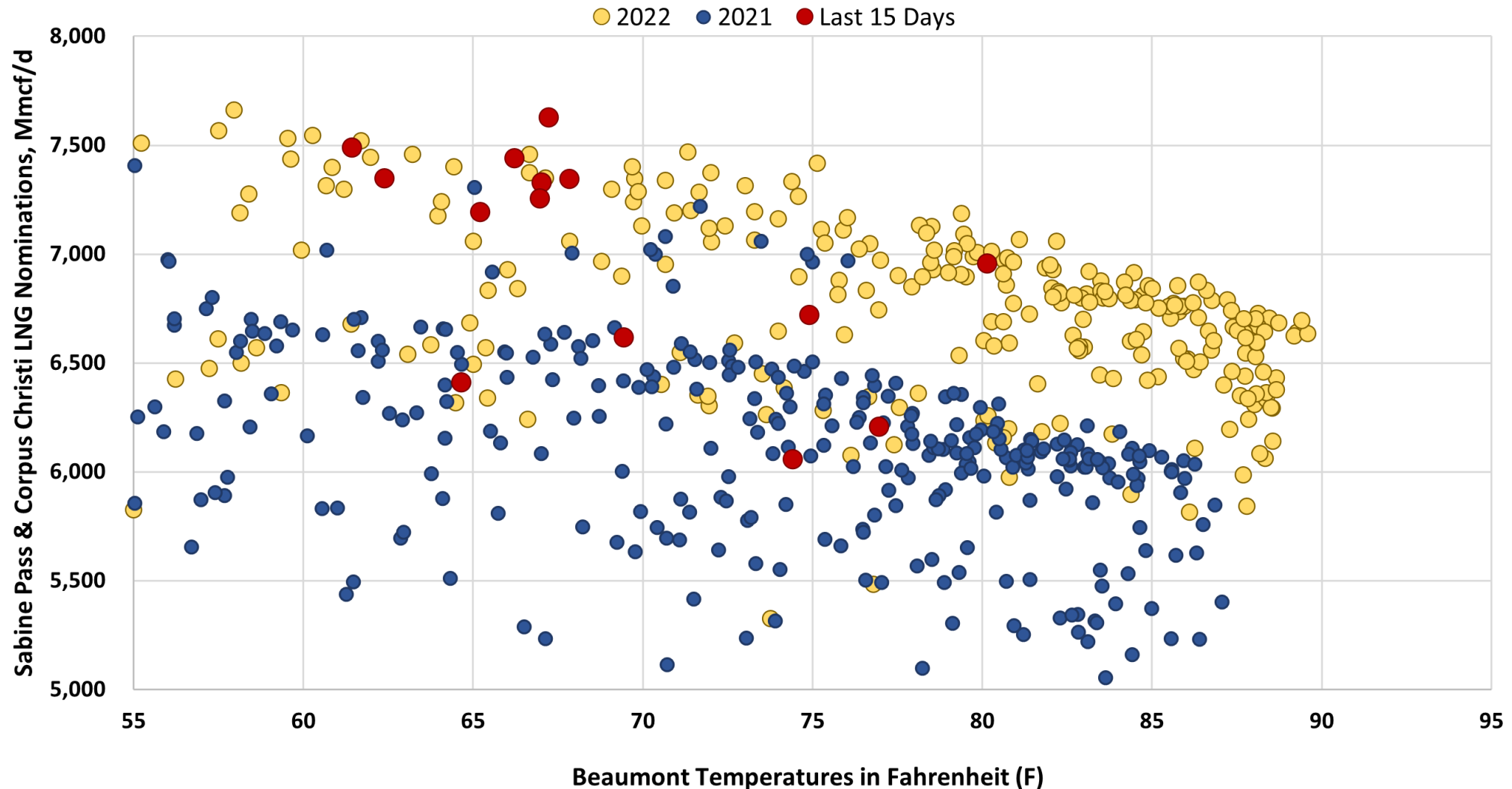
U.S. Net Canadian Pipeline Imports





Cheniere Facility Nominations vs. Beaumont, TX Temperatures

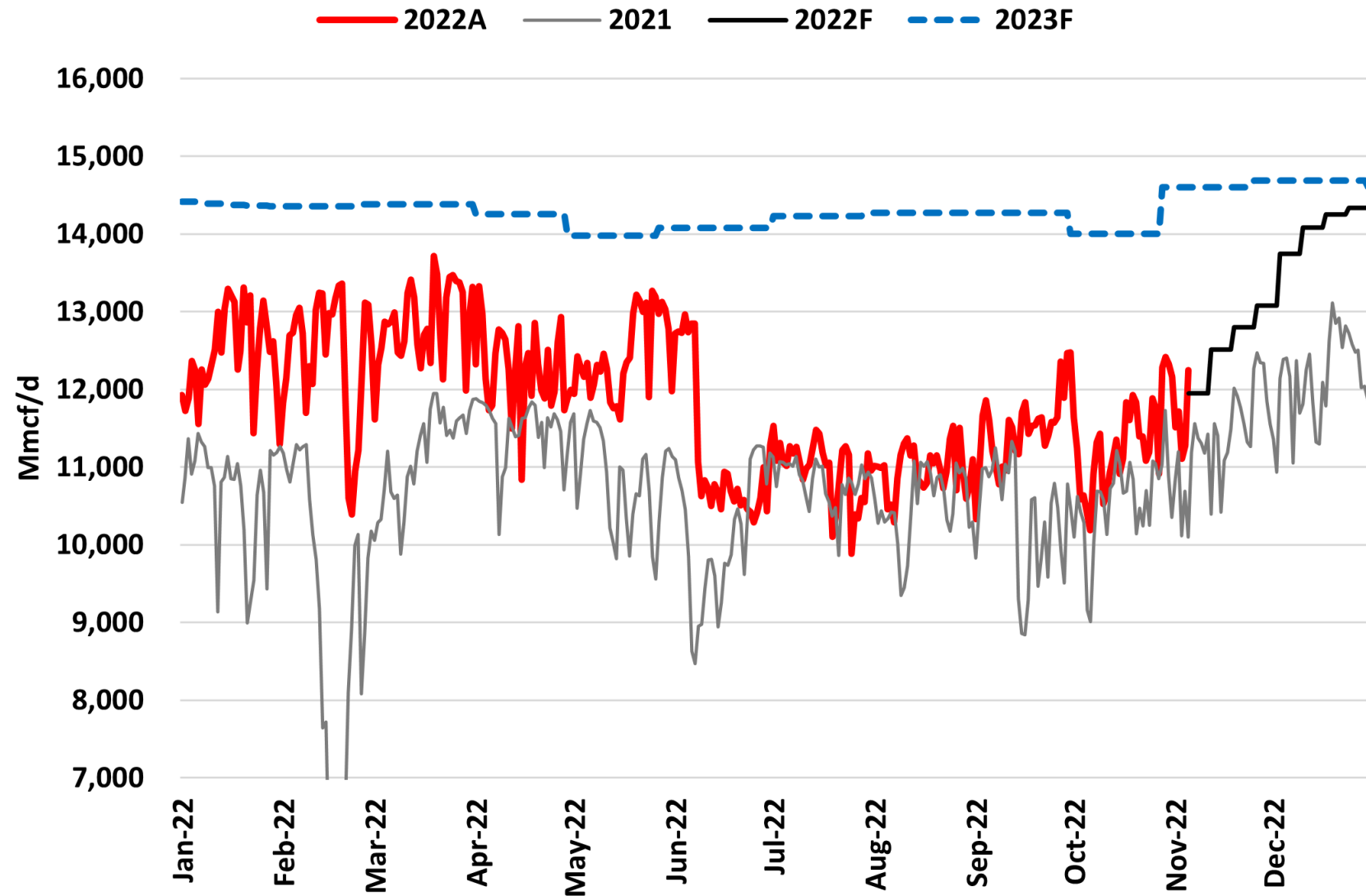
Criterion & ICE Weather Data via ICE RTD



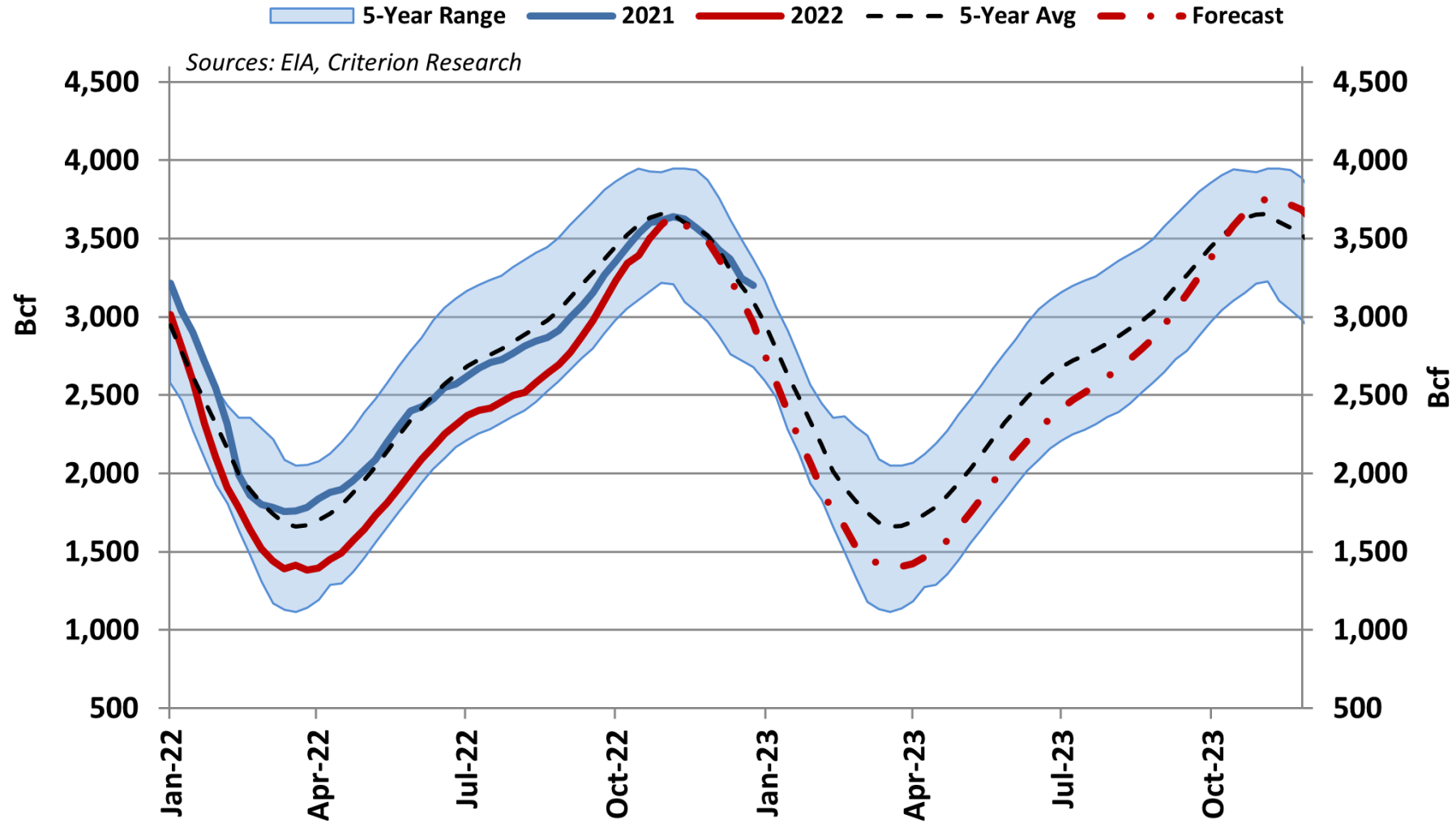
ICE Tickers: *PLAG.LNGEXP.SUM.SPL.A-CRIT, PLAG.LNGEXP.SUM.CCL.A-CRIT, KORG-METR*

Source: Criterion Research, LLC

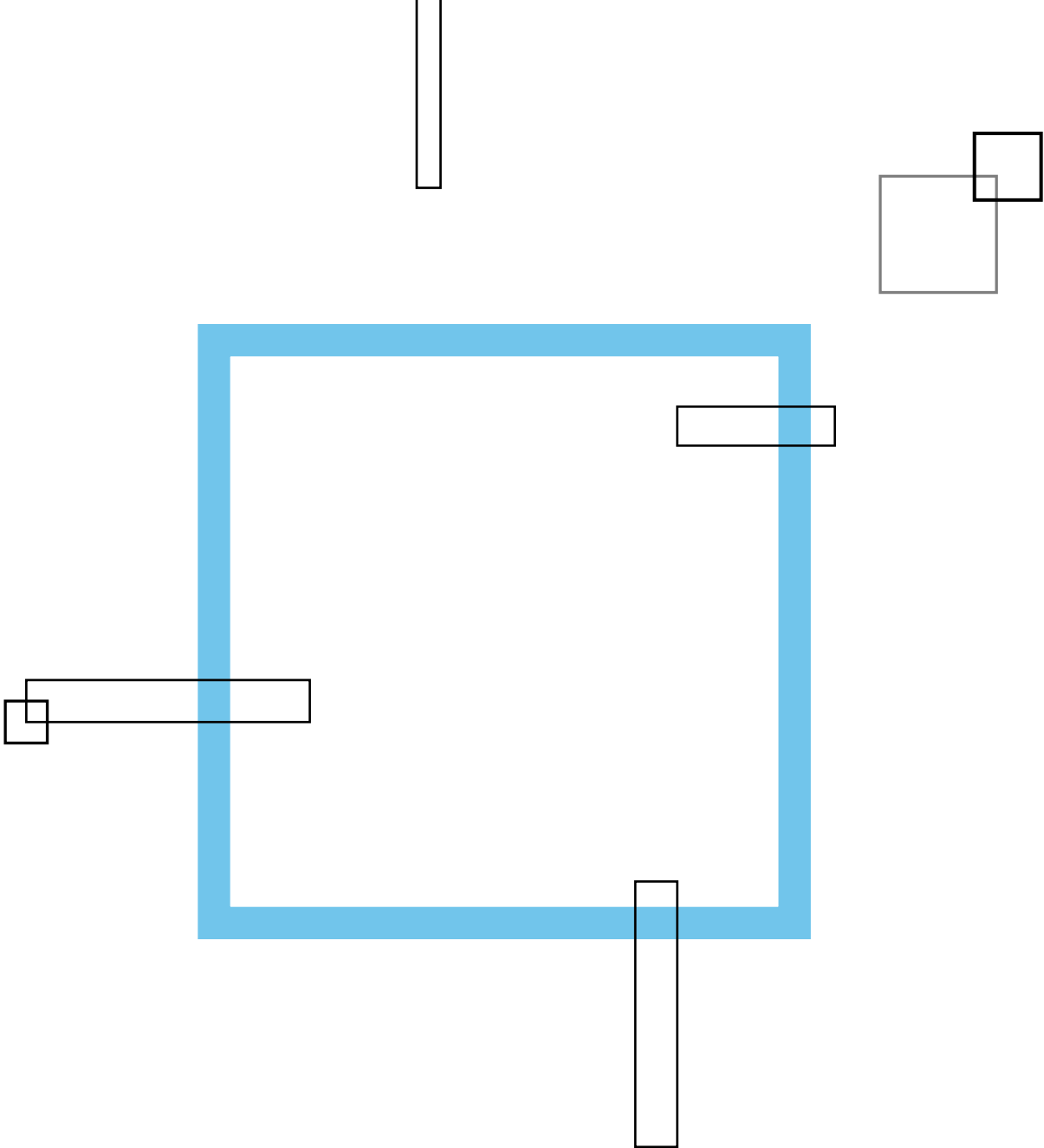
U.S. LNG Feed Gas Demand Outlook



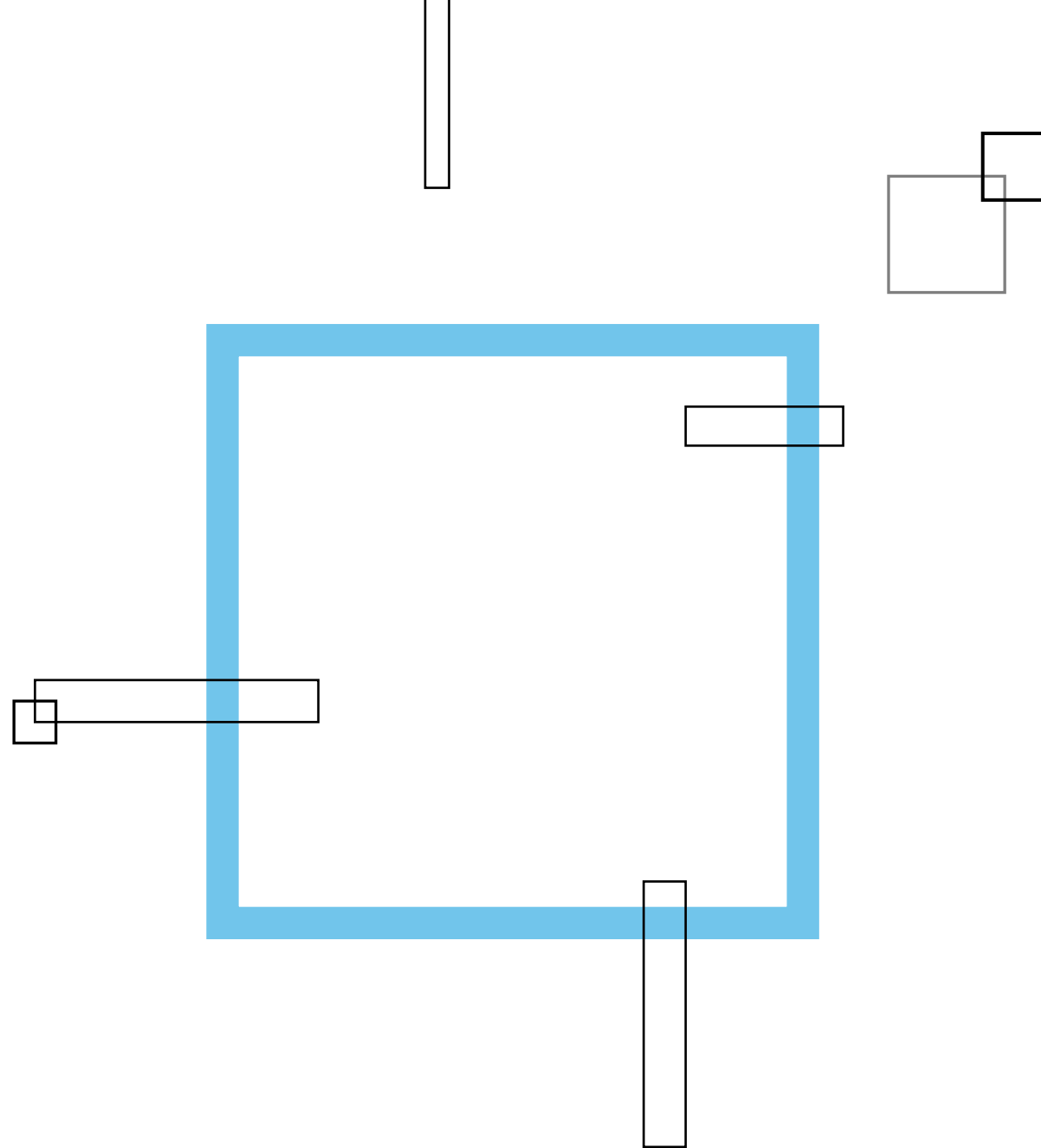
Lower 48 NG Storage



Q&A



Thank you



Limitations

This presentation contains information that is proprietary property of Intercontinental Exchange, Inc., its affiliates, and/or Criterion Research or its affiliates, is not to be published, reproduced, copied, disclosed or used without the express written consent of Intercontinental Exchange, Inc. and/or its affiliates.

This presentation is provided for informational purposes only. The information contained herein is subject to change and does not constitute any form of warranty, representation, or undertaking. Nothing herein should in any way be deemed to alter the legal rights and obligations contained in agreements between Intercontinental Exchange, Inc. and/or any of its affiliates and their respective clients relating to any of the products or services described herein. Nothing herein is intended to constitute legal, tax, accounting, investment or other professional advice.

ABOUT INTERCONTINENTAL EXCHANGE: Intercontinental Exchange, Inc. (NYSE: ICE) is a Fortune 500 company and provider of marketplace infrastructure, data services and technology solutions to a broad range of customers including financial institutions, corporations and government entities. We operate regulated marketplaces, including the New York Stock Exchange, for the listing, trading and clearing of a broad array of derivatives contracts and financial securities across major asset classes. Our comprehensive data services offering supports the trading, investment, risk management and connectivity needs of customers around the world and across asset classes. As a leading technology provider for the U.S. residential mortgage industry, ICE Mortgage Technology provides the technology and infrastructure to transform and digitize U.S. residential mortgages, from application and loan origination through to final settlement.

ABOUT ICE DATA SERVICES: ICE Data Services refers to a group of products and services offered by certain Intercontinental Exchange, Inc. (NYSE:ICE) companies and is the marketing name used for ICE Data Services, Inc. and its subsidiaries globally, including ICE Data Indices, LLC, ICE Data Pricing & Reference Data, LLC, ICE Data Services Europe Limited and ICE Data Services Australia Pty Ltd. ICE Data Services is also the marketing name used for ICE Data Derivatives, Inc., ICE Data Analytics, LLC certain other data products and services offered by other affiliates of Intercontinental Exchange, Inc.

Trademarks of Intercontinental Exchange, Inc. and/or its affiliates include: Intercontinental Exchange, ICE, ICE block design, NYSE, ICE Data Services, ICE Data and New York Stock Exchange. Information regarding additional trademarks and intellectual property rights of Intercontinental Exchange, Inc. and/or its affiliates is located at www.intercontinentalexchange.com/terms-of-use. Other products, services, or company names mentioned herein are the property of, and may be the service mark or trademark of, their respective owners.

© 2022 Intercontinental Exchange, Inc.