

# ICE Connect



Platform overview



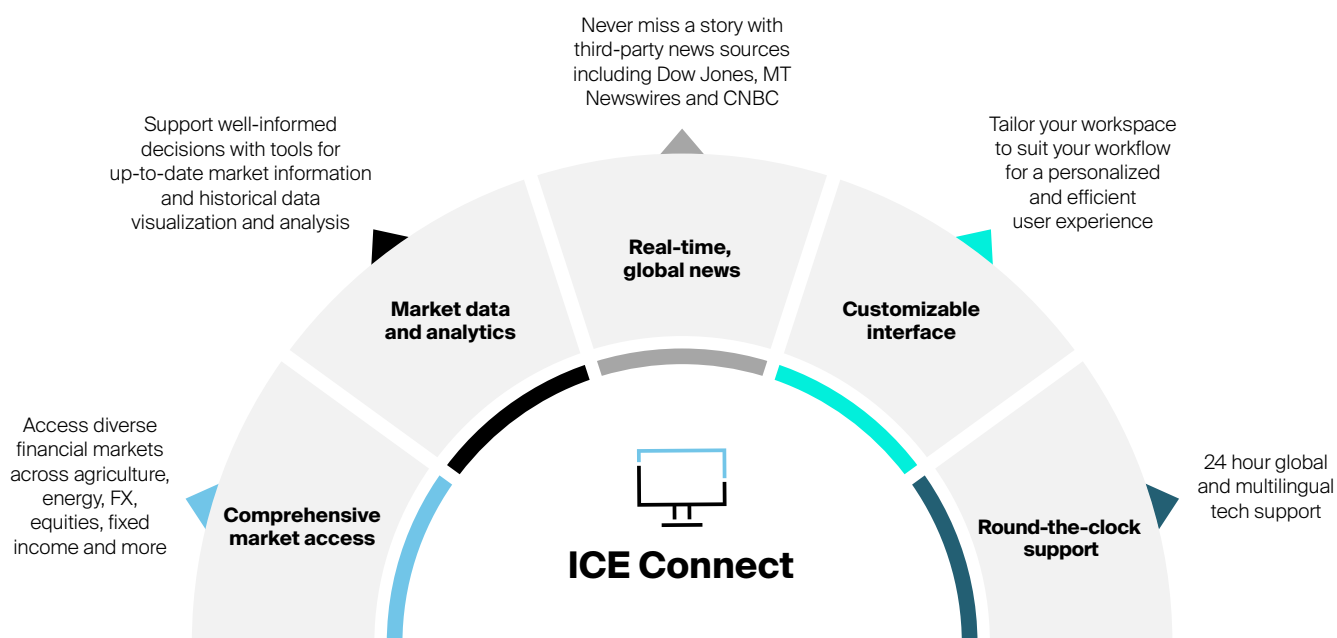


# ICE Connect

A platform built for financial markets. Driven by financial markets.

ICE Connect brings together access to cutting-edge trading tools with live cross-asset data, global news, and analytics all on one platform.

Whatever your role, ICE Connect can be customized based on various asset classes and workflows, allowing you to access the data, analytics and capabilities you need without the clutter and expense of what you don't.





# Workflow customizations

## Access trading and analytic tools

Connect to comprehensive tools designed to help spot opportunities, finetune strategy, and effectively manage price and currency risk across multiple-asset classes

## Risk

Power your risk management with industry-leading continuous or end-of-day (EOD) evaluations and real-time listed markets pricing

## Treasury

Streamline your processes with access to cross-asset market data to help support your cash management functions

## Wealth advisory

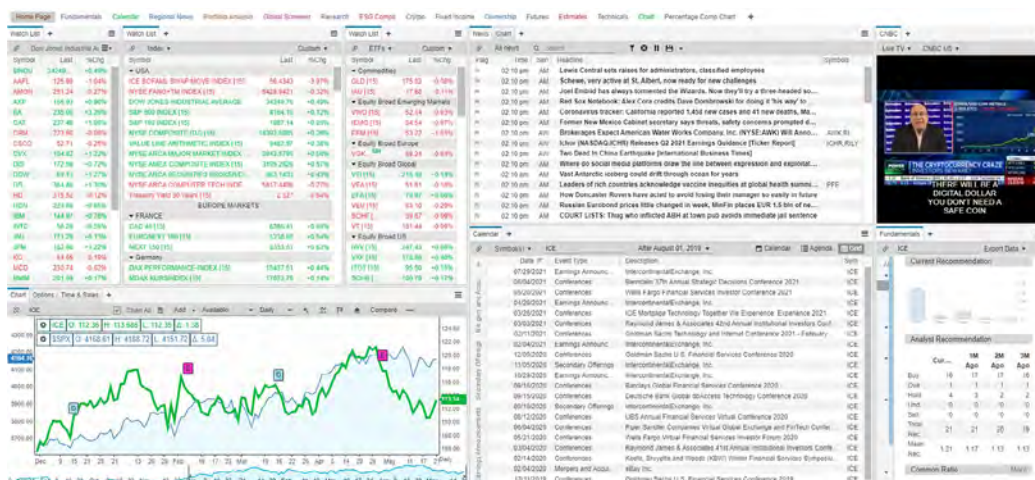
Access client portfolio data alongside global market data, news and tools to analyze securities and holdings

## Asset servicing, middle and back-office

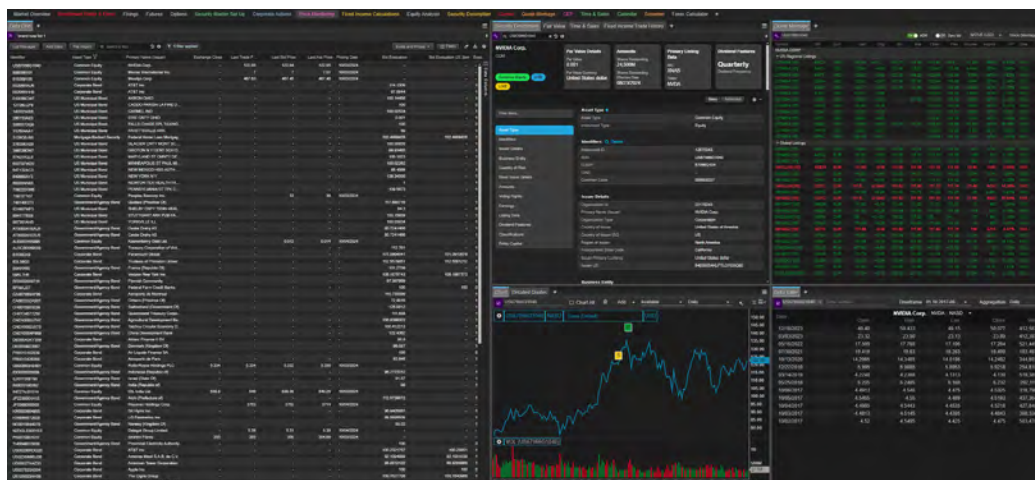
Seamless access via one integrated web-based interface to ICE's evaluations, exchange pricing, fundamental data, news and analytics

## Operational support

Cost effective and flexible delivery of content and capabilities designed to fit the needs of internal operations and support teams



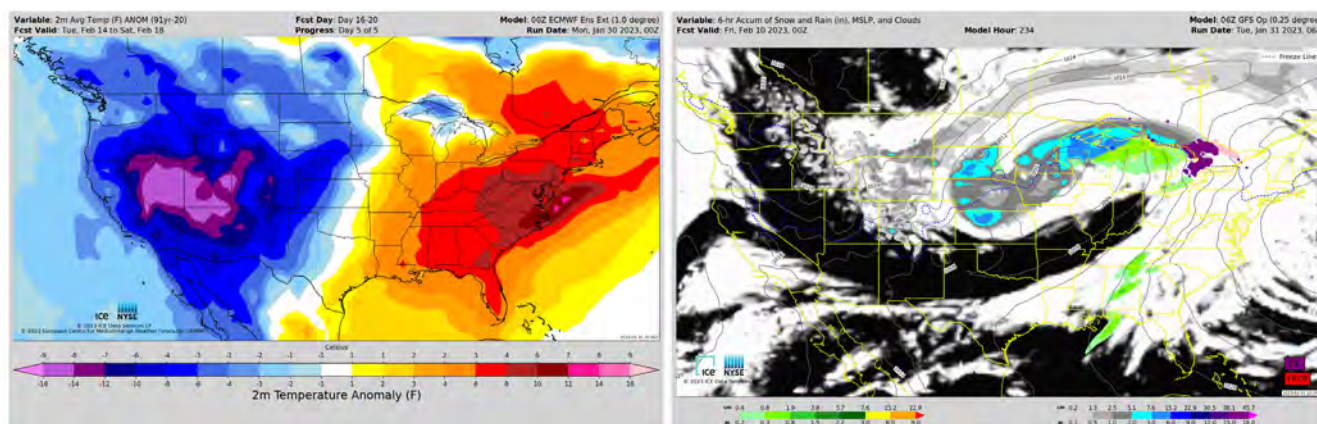
ICE Connect - Wealth desktop



ICE Connect - Asset servicing desktop

\*Screenshots are display examples but not exhaustive of the ICE Connect platform.

# Global weather coverage



ICE Connect – Weather map

200+ weather forecast fields including Gas Weighted Degree Days, snow, wind, solar, soil moisture, liquid precipitation, temperatures, humidity, pressure and more

Global coverage: 1,000+ global locations and 6,000+ locations ready to add upon request

Pre-calculated climatology for trailing 10, 15 and 30 years as well as the official 30-year models

# Markets covered



Oil



Gas and power



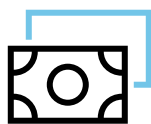
Energy transition



Agriculture



Equities



Fixed income



Futures and options



Funds



Indices

# ICE Connect | oil

Navigate the complexities of the oil market with access to 600+ global oil products and coverage across 180+ exchanges daily using ICE Connect Oil Desktop, powered by S&P Global Commodity Insights.

- Price discovery across global crude and refined product markets through ICE Futures market data other exchanges and third-party market assessors
- Comprehensive view of supply and demand by product, including global refinery capacity and outages, future refinery expansion, and U.S. storage and import forecasts through Platts World Refinery Database and Oil Inventory and global cargo movements on water through cFlow and Kpler vessel tracking
- Industry news and government statistics, including EIA, JODI, PJK, IEA, OPEC, API and more

The screenshots display the ICE Connect Oil Desktop interface, which includes:

- Oil Desktop Dashboard:** A top navigation bar with tabs for Oil Desktop, Crude Overview, ICE Futures Board, Brent, Murban, Permian WTI, Permian WTI Diff, WTI, DSI, and EIA. Below this is a table of oil products with columns for Symbol, Description, Delivery, Last, Chg, Bid, Ask, ICE Theop, Volume, and % of Total.
- Platts cFlow:** A map showing global oil shipping routes and volumes. The top screenshot shows the Middle East region, while the bottom screenshot shows the Gulf of Mexico region.
- Time & Sales:** A window showing the price and volume of oil futures contracts over time. It includes a candlestick chart and a table of trade data with columns for Date, Time, Price, and Volume.
- News and Statistics:** A section on the right side of the dashboard displaying news headlines and EIA Weekly Statistics.

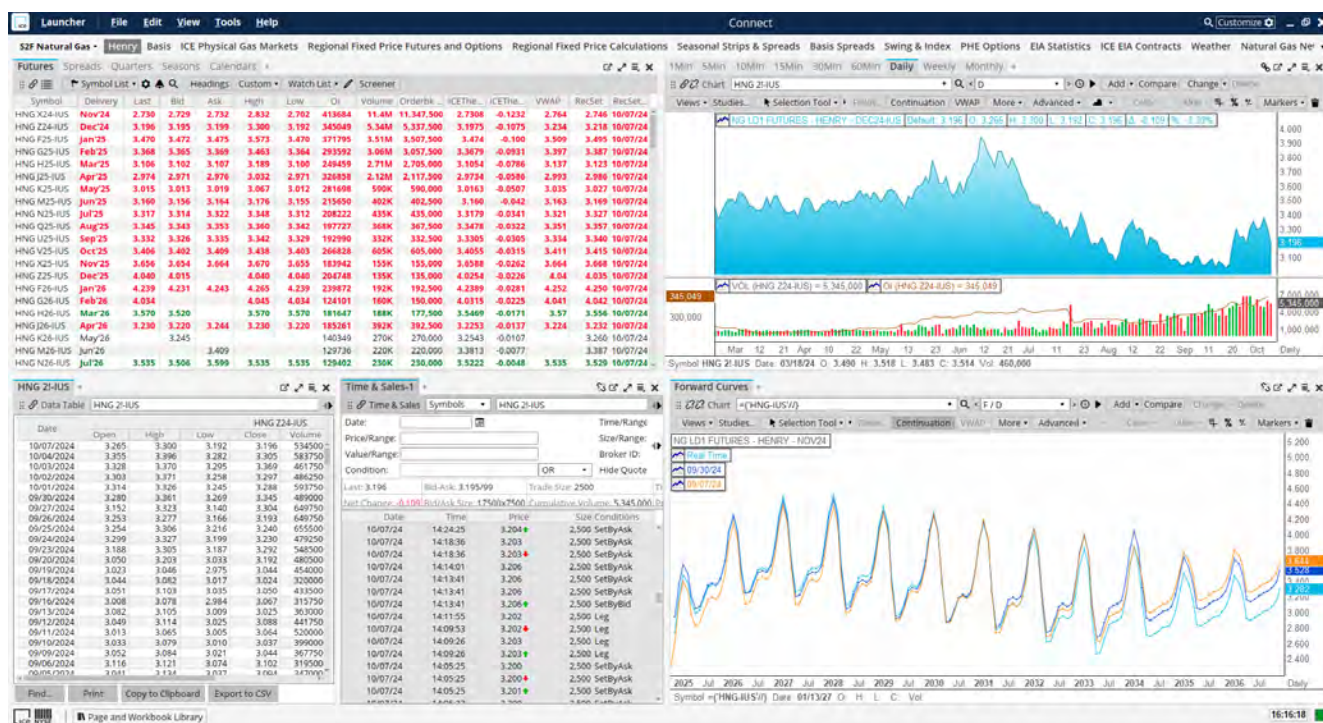
ICE Connect – Oil desktop, powered by S&P Global Commodity Insights

\*Screenshots are display examples but not exhaustive of the ICE Connect platform.

# ICE Connect | gas and power

Stay ahead of the evolving dynamics in the natural gas and power markets with access to global exchange data from ICE Futures markets, as well as 180+ third-party exchanges.

- Proprietary weather forecast, power and gas demand data, including Heating Degree Day, Cooling Degree Day, and Gas Weighted Degree Day for thousands of locations and regions
- Price discovery data and real-time market fundamentals, including pipeline flows, global gas movements and country-specific gas inventories
- Data from Dow Jones Energy News, MT Newswires Pro, Argus Gas and Power News, Argus Energy Transition News, U.S. Nat Gas Storage Survey (The Desk), Rig Data (Baker Hughes), JODI Supply Demand Data, EIA/DOE, CFTC Data, and ICE Data Services Daily FX Rates



ICE Connect – Natural gas desktop

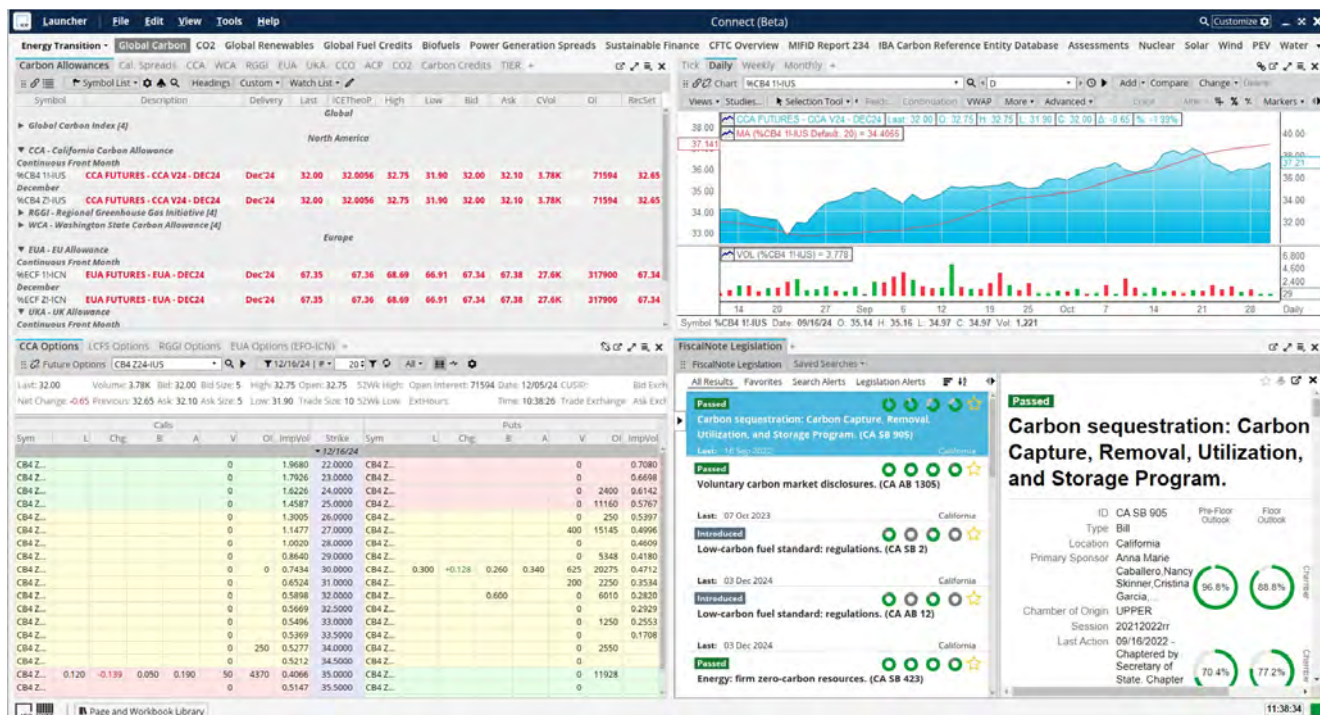
\*Screenshots are display examples but not exhaustive of the ICE Connect platform.



# ICE Connect | energy transition

Get real-time ICE exchange pricing for renewable fuels, carbon sustainable finance data, and carbon allowances/credits data.

- Real-time ICE Futures prices
- ICE theoretical pricing, power generation spreads and integrated weather mapping
- Access to 180+ external exchanges and seamless data transfer with the designated ICE XL, an add-in for Excel
- ICE Carbon Reference Entity Data Service (ICE CRED) for standardized, aggregated, and validated reference data for the carbon credit market
- Global carbon data, including CCA, RGGI, EUA and UKA futures/options, regulatory data and climate data with ESG and green bond indices, California Carbon Offset futures, ICE Global Carbon Index Futures and primary auction data
- Renewable coverage: U.S. Compliance and voluntary REC/SREC futures, and guarantees of origin assessment pricing
- Global fuel coverage, including US RINs, CA LCFS futures, and Global Biofuel futures
- Industry leading Forex data, government and agency data, FiscalNote legislation tracking, multiple Pricing Reporting Agencies' Energy Transition/Environmental Social, Governance assessments and data, Argus' Energy Transition news, and Hydrogen and Air Daily publications
- ICE Fundamental Data, including Rhine Rates - PEGEL, Magellan, Abu Dhabi National Oil Company, GIE and FRED
- FX and Refinery Margin Calculators



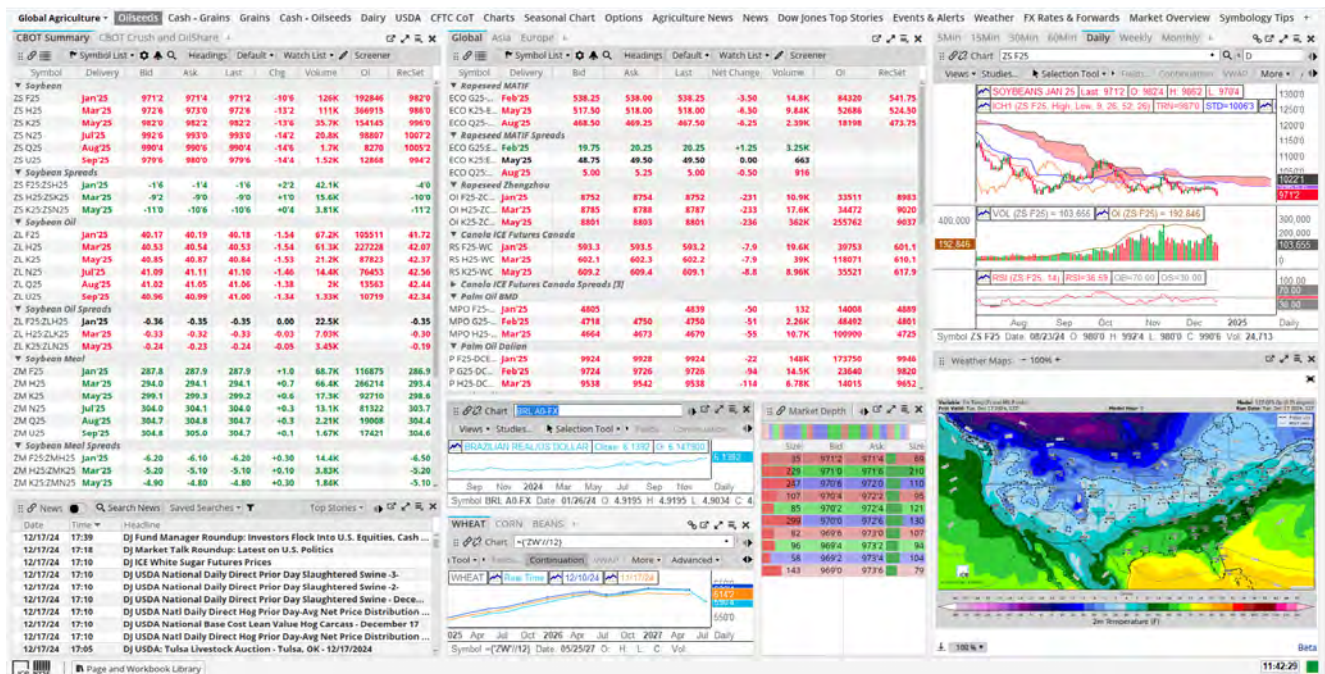
ICE Connect – Energy transition desktop

\*Screenshots are display examples but not exhaustive of the ICE Connect platform.

# ICE Connect | agriculture

Gain insights into products such as meals, grains, wheat, oilseeds, and vegetable oils. Explore the interplay of supply and demand forces influenced by different variables.

- Integrated supply and demand data from diverse sources such as World Agriculture Supply and Demand Estimates and Foreign Agricultural Service, along with proprietary weather data for estimating crop supply
- Latest ags news: Dow Jones Commodities Service, MT Newswires Pro, Dataminr, and IHS Markit Agri News
- Live data: USDA Statistics, IHS Markit Agri PDF Reports, CFTC Data, WASDE Supply Demand Data and Commodity Cash Pricing
- ICE proprietary data and content: ICE Softs Fundamental Data, ICE Theoretical Pricing, ICE Weather Data, ICE Weather Maps, ICE Data Services Daily FX Rates, ICE Connect General Content (EZTP) and more



ICE Connect - Agriculture desktop

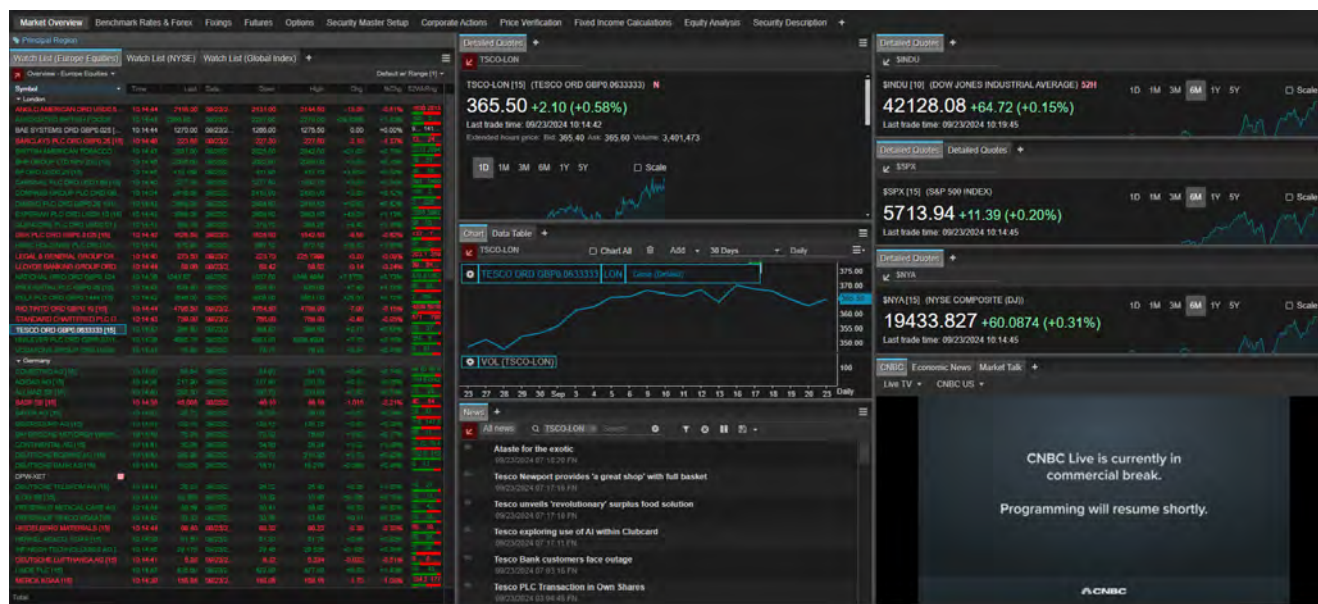
\*Screenshots are display examples but not exhaustive of the ICE Connect platform.



# ICE Connect | equities

Leverage robust real-time, delayed and EOD global equity L1 and L2 coverage and associated fundamentals, corporate actions and functionality.

- Intraday, daily, or trade level tick data with a comprehensive set of charting, data table, and excel capabilities
- Extensive associated fundamentals, corporate actions, and market insights to help inform decision-making
- Intuitive functionality tailored to wealth management needs, enhancing research, portfolio tracking, and market analysis



ICE Connect - Equities desktop

\*Screenshots are display examples but not exhaustive of the ICE Connect platform.

# ICE Connect | fixed income

View comprehensive terms and conditions and corporate actions data, evaluated and listed market pricing and fixed income calculators.

- Access ICE's high quality fixed income evaluations, both End-of-Day and Continuous Evaluated Pricing (CEP) across ~2.5 million securities
- Transparency into fixed income evaluations, including ICE Liquidity Indicators
- Comprehensive fixed income Security Master covering ~6.2 million live securities
- Perform single security fixed income calculations, such as accrued interest, price/yield, DV01, and durations

The screenshot displays the ICE Connect Fixed Income desktop interface. The main window is titled "LOS ANGELES CALIF DEPT WTR & PWR" and shows various tabs for "Market Overview", "Benchmark Rates & Rates", "Flows", "Values", "Options", "Security Master Setup", and "Corporate Actions". The interface is divided into several sections:

- Security Description:** Shows the security identifier "US5445320G43" and the security name "LOS ANGELES CALIF DEPT WTR & PWR".
- Market Overview:** Displays the coupon rate at 5.000%, the issue date as 02/03/2022, and the maturity date as 07/01/2031. It also shows the amount at 8.00M and the debt details, including the type "Municipal Bond" and the issuer "Electric & public power".
- Asset Type:** Identifies the asset as "US Municipal Bond".
- Identifiers:** Lists various identifiers such as "CUSIP" (5445320G4) and "SEDOL" (24890C7).
- Issuer Details:** Provides information about the issuer, including the organization name "LOS ANGELES CALIF DEPT WTR & PWR" and the country of origin "United States of America".
- Fixed Income Calculator:** A section for performing calculations, showing the price at 116.740 and the yield to maturity (YTM) at 2.31%.
- Fixed Income Cash Flow:** A table showing the cash flow schedule for the security, including interest and principal payments over time.

Date	Interest	Principal	Total
Total	25000.00	1000000.00	1350000.00
01/01/2025	25000.00	0.00	25000.00
07/01/2025	25000.00	0.00	25000.00
01/01/2026	25000.00	0.00	25000.00
07/01/2026	25000.00	0.00	25000.00
01/01/2027	25000.00	0.00	25000.00
07/01/2027	25000.00	0.00	25000.00
01/01/2028	25000.00	0.00	25000.00
07/01/2028	25000.00	0.00	25000.00
01/01/2029	25000.00	0.00	25000.00
07/01/2029	25000.00	0.00	25000.00
01/01/2030	25000.00	0.00	25000.00
07/01/2030	25000.00	0.00	25000.00
01/01/2031	25000.00	0.00	25000.00
07/01/2031	25000.00	1000000.00	1025000.00

ICE Connect – Fixed income desktop

\*Screenshots are display examples but not exhaustive of the ICE Connect platform.



# ICE Connect | futures and options

Connect to the deep liquidity and transparency of multiple futures and options markets.

- Real-time data from 180+ global derivative exchanges, including ICE Futures Exchanges, to visualize forward curves, seasonality, unit of measure conversion and FX exposure
- Key reference data across all strategies and tenors for seamless scalability of your derivative data needs
- Manage volatility with risk analysis, strategy back testing and price modeling tools in dedicated options modules

ICE Connect - Options desktop

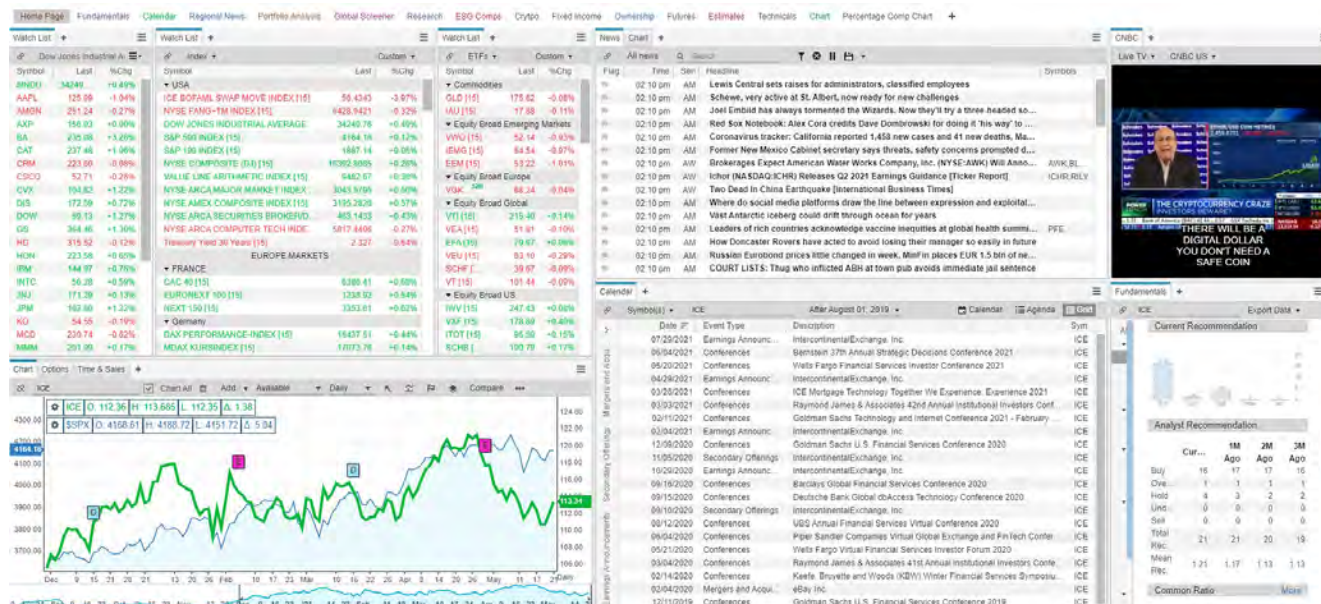
\*Screenshots are display examples but not exhaustive of the ICE Connect platform.



# ICE Connect | indices

Connect to a broad portfolio of proprietary and key third-party indices.

- A diverse range of indices across multiple asset classes, including equities, fixed income, and commodities, to support diverse investment strategies
- Advanced analytics tools for in-depth index performance analysis, benchmarking, and comparison against market trends
- Benefit from the proprietary ICE Data Indices, offering global, multi-asset class indices for comprehensive coverage and insights



ICE Connect – Indices desktop

\*Screenshots are display examples but not exhaustive of the ICE Connect platform.

# Advanced capabilities

## Proprietary and third-party data integration

- Securely integrate your data into ICE Connect to leverage its suite of visualization tools for comprehensive analysis and insights
- Set up and manage permissions for both new and existing datasets and connections, whether by individual users or groups of users, for precise control and secure access at every level
- Every client receives a private and secure instance of ICE Connect. Your data is not transferred to or stored on ICE servers

## Python integration

- Access specific data via Python for quotes, time series and time and sales
- Access historical aggregated bar data with intervals as granular as 1-minute
- Real-time, delayed and T+1 historical data available across various asset classes and exchanges

## ICE XL, an add-in for Excel

- Benefit from intuitive, flexible and powerful data visualization with dynamic worksheets
- Access historical data, time and sales, forward curve builder, options analytics and market depth

## ICE Chat integration

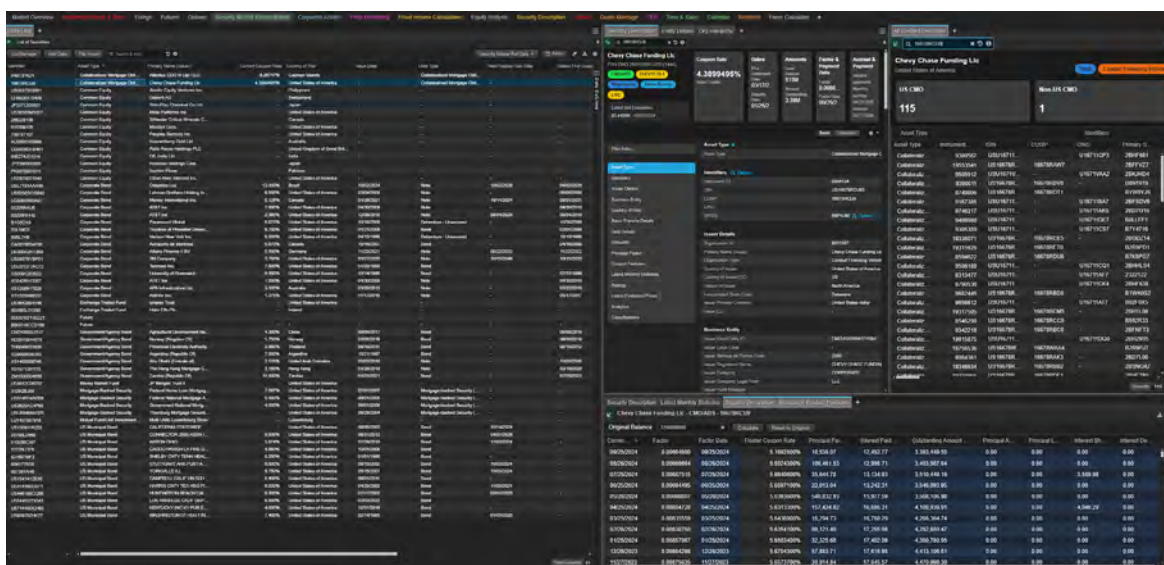
- Seamlessly integrate your broker bids/offers from ICE Chat into ICE Connect's charting, watch lists and time and sales widgets
- View real-time and historical chat data alongside exchange data
- Includes integration with ICE Connect's ICE XL, an add-in for Excel

## Widget library

- Seamlessly integrate financial data into your platform, website or applications and portals
- Deliver financial information to your end users while reducing your development overhead
- Plug and play widgets built using the latest web standards – watchlist, charting, detailed quotes

## Web-based access

- View company fundamental data, real-time market data and news in a lightweight solution
- Access across multiple browsers and devices, with no download or installation updates required
- Maximize your screen usage with a user-friendly customizable interface, create workspaces and layouts to suit your specific workflow requirements



ICE Connect - Web-based access

\*Screenshots are display examples but not exhaustive of the ICE Connect platform.

# Patented and streamlined workflows

- Patented workflows and interactivity with ICE Connect Maps and geospatial data overlays
- Business Intelligence (BI) query patents allowing for sophisticated data queries within traditional and accessible desktop workflows
- Patented unique overlays of weather data and the impact of live pricing
- Bespoke FX conversion engine to manage FX exposure at any point in time or for forward markets



ICE Connect – Map



ICE Connect – My Chart

\*Screenshots are display examples but not exhaustive of the ICE Connect platform.

This material contains information that is confidential and proprietary property and/or trade secret of Intercontinental Exchange, Inc. and/or its affiliates (the "ICE Group"), and is not to be published, reproduced, copied, disclosed or used without the express written consent of ICE Group.

This material is provided for informational purposes only. The information contained herein is subject to change and does not constitute any form of warranty, representation, or undertaking. Nothing herein should in any way be deemed to alter the legal rights and obligations contained in agreements between ICE Group and their respective clients relating to any of the products or services described herein. Nothing herein is intended to constitute legal, tax, accounting, investment or other professional advice.

ICE Group makes no warranties whatsoever, either express or implied, as to merchantability, fitness for a particular purpose, or any other matter. Without limiting the foregoing, ICE Group makes no representation or warranty that any data or information (including but not limited to evaluations and ICE exchange market data) or services supplied to or by it are complete or free from errors, omissions, or defects and nothing contained herein should constitute any form of warranty, representation, or undertaking.

Certain data mentioned herein may require a license from the source and include additional fees.

ICE Chat is an instant messaging service available from ICE Data LP. ICE Chat is not (i) a trading facility and does not function as a trading facility within the meaning of Section 1a of the Commodity Exchange Act ("CEA"), (ii) a broker-dealer, exchange or alternative trading system for purpose of the Securities Exchange Act of 1934, as amended, or (iii) an entity or person in any jurisdiction outside of the United States of America having qualifications similar to the qualifications referenced in (i) and (ii) of this sentence.

ICE CRED is provided by ICE Benchmark Administration Limited and is subject to the disclaimers and notices which are on the ICE CRED webpage at [theice.com/lba/ice-cred](http://theice.com/lba/ice-cred).

Trading analytics available from ICE Data Pricing & Reference Data are a point in time output and as such are dependent on and take into account the information available to ICE Data Pricing & Reference Data at the time of calculation. ICE Data Pricing & Reference Data does not have access to all relevant trade-related data or dealer quotes, and the utility of the output may diminish depending upon the amount of available data underlying the analysis. The inputs utilized in each of the trading analytics services described herein depend on the methodologies employed by each such service and may not be the same as the inputs used in the other trading analytics services. There are many methodologies (including computer-based analytical modelling) available to calculate and determine information such as the trading analytics described herein. ICE Data Pricing & Reference Data's trading analytics may not generate results that correlate to actual outcomes, and/or actual behavior of the market, such as with regard to the purchase and sale of instruments. There may be errors or defects in ICE Data Pricing & Reference Data's software, databases, or methodologies that may cause resultant data to be inappropriate for use for certain purposes or use cases, and/or within certain applications. Certain historical data may be subject to periodic updates over time due to recalibration processes, including, but not limited to the enhancement of ICE Data Pricing & Reference Data's models and the increased coverage of instruments. Although ICE Data Pricing & Reference Data may elect to update the data it uses from time to time, it has no obligation to do so.

Fixed income evaluations, continuous evaluated pricing, end-of-day evaluations, evaluated curves, model-based curves, market sentiment scores, Size-Adjusted Pricing, and Fair Value Information Services related to securities are provided in the US through ICE Data Pricing & Reference Data, LLC and internationally through ICE Data Services entities in Europe and Asia Pacific. ICE Data Pricing & Reference Data, LLC is a registered investment adviser with the US Securities and Exchange Commission. Additional information about ICE Data Pricing & Reference Data, LLC is available on the SEC's website at [adviserinfo.sec.gov](http://adviserinfo.sec.gov). A copy of ICE Data Pricing & Reference Data, LLC's Form ADV is available upon request.

Trading and execution services are offered through ICE Bonds Securities Corporation or ICE Bonds, member [FINRA](http://www.finra.org), MSRB and [SIPC](http://www.sipc.com). The information found herein, has been prepared solely for informational purposes and should not be considered investment advice, is neither an offer to sell nor a solicitation of an offer to buy any financial product(s), is intended for institutional customers only and is not intended for retail customer use.

ICE Data Services refers to a group of products and services offered by certain Intercontinental Exchange, Inc. (NYSE:ICE) companies and is the marketing name used for ICE Data Services, Inc. and its subsidiaries globally, including ICE Data Indices, LLC, ICE Data Pricing & Reference Data, LLC, ICE Data Services Europe Limited and ICE Data Services Australia Pty Ltd. ICE Data Services is also the marketing name used for ICE Data Derivatives, Inc., ICE Data Analytics, LLC, and certain other data products and services offered by other affiliates of Intercontinental Exchange, Inc. (NYSE:ICE).

Trademarks of ICE Group include: Intercontinental Exchange, ICE, ICE block design, NYSE, ICE Data Services, ICE Data and New York Stock Exchange. Information regarding additional trademarks and intellectual property rights of ICE Group is located at [ice.com/terms-of-use](http://ice.com/terms-of-use). Other products, services, or company names mentioned herein are the property of, and may be the service mark or trademark of, their respective owners.