

ICE ETF Hub

Simple. Efficient. Transparent.

Advancing the ETF industry

The U.S. ETF market has seen tremendous growth. As assets and trade volumes have accelerated, so has the need for solutions that drive further efficiencies in the primary markets. The ICE ETF Hub provides standards to simplify the creation and redemption process for ETFs across all asset classes for more than 40 APs and market makers, and over 140 issuers and their service providers.

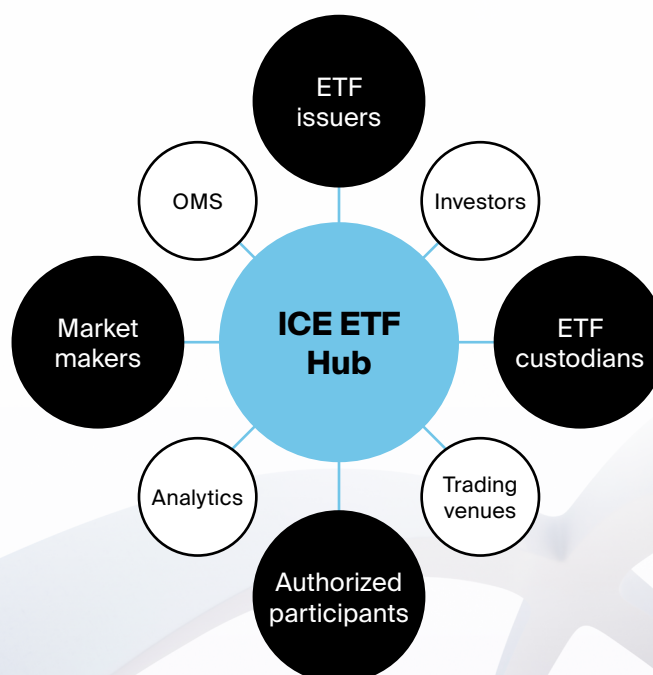
- Simplified workflow reduces number of connections and platforms
- Robust API protocols offer standardization and simplicity
- Comprehensive set of services offer solutions across the primary trading workflow
- Open architecture
- Real time status updates via ICE Chat
- Ability to STP orders in real time
- Integrate into ICE's fixed income data and execution platforms

40+
APs & MMs
140+
Issuers
850+
ETFs

Bringing efficiencies to the primary trading workflow

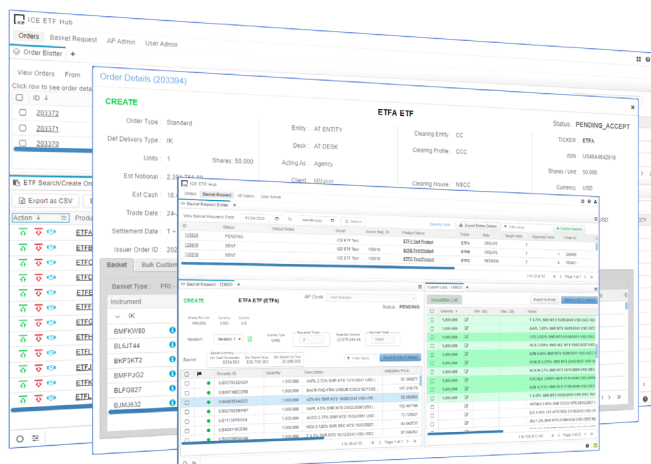
- Order Entry & History Management – Streamlined ETF order entry across all ETFs through FIX API messaging and user interface
- Custom Basket Facilitation – User interface and standardized API messaging to improve the speed and accuracy of custom basket facilitations for fixed income and equity ETFs
- Chat – Seamless integration with ICE instant messaging enabling real-time communication throughout the order workflow
- Secondary Market Liquidity – Source bonds directly via connectivity to ICE Bonds liquidity pools
- Broad Issuer Data – Gain access to a universal set of U.S. ETF Issuer data via connectivity to RIMES

Connecting market participants



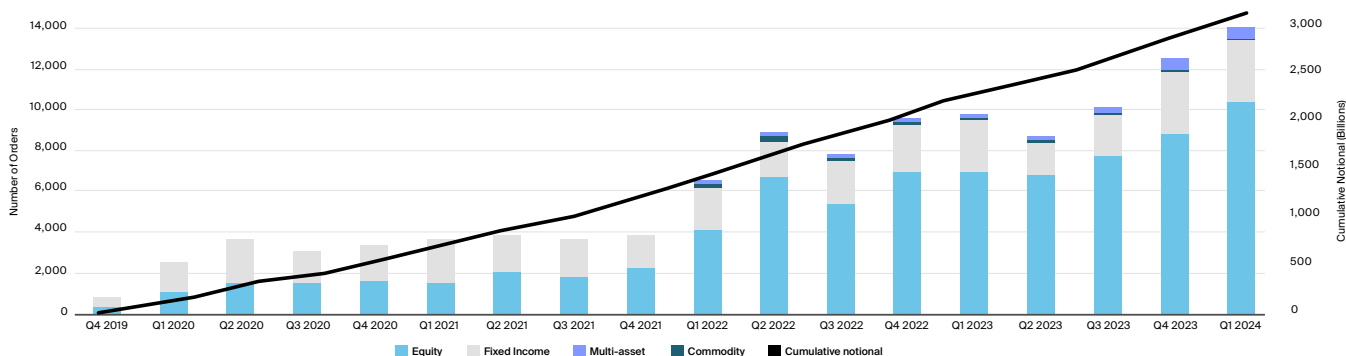
Security coverage

- U.S. Domestic Equity ETFs
- U.S. Corp Fixed Income ETFs
- U.S. Muni ETFs
- U.S. Treasury ETFs
- Commodities ETPs
- Derivatives ETFs
- Multi-Asset ETFs
- U.S. International Equity ETFs
- U.S. International FI ETFs



Steady growth & development

ETF Hub volume 2019-2024



2019

- ETF Hub launched with support for equity and fixed income ETF order placement
- Introduced bulk-order entry

2020

- FIX API developed and integrated for standard order entry and basket negotiation
- Support screening basket proposals against a list of securities provided by the portfolio manager
- Launched Issuer Direct functionality allowing issuers and their agents to manage the C/R workflow through ETF Hub

2021

- Multi-factored feedback added for basket negotiations
- Display product and basket reference data in the GUI
- Enhanced Issuer Direct order notifications and confirmations, and PCF consumption and end of day reporting

2022

- US Bank replaced the DASH order entry system with ETF Hub
- JPM Custody integration for basket negotiation
- Enhanced custom basket feature to support pre-approved baskets and directed baskets

2023

- Support for ETN creations/redemptions
- Support for ActiveShares® ETF creations/redemptions
- Expand order entry functionality for Ireland-domiciled ETPs
- API integration with LiquidityBook

2024

- Share class switching functionality
- Directed trade support for cash orders
- Incorporate market and portfolio analytics to aid in basket negotiation
- Support for ETPs domiciled in the European Union

This overview is for informational purposes only and contains information that is confidential and proprietary property and/or the trade secrets of Intercontinental Exchange, Inc. and/or its affiliates. The information herein is not to be published, reproduced, copied, disclosed or used without the prior express written consent of Intercontinental Exchange, Inc. and/or its affiliates. The information contained herein is subject to change and does not constitute any form of warranty, representation, or undertaking. Nothing herein is intended to constitute legal, tax, accounting or other professional advice and does not constitute an offer to sell or a solicitation of an offer to buy any interests in securities. Trademarks of Intercontinental Exchange, Inc. and/or its affiliates include: Intercontinental Exchange, ICE, ICE block design, NYSE, ICE Data Services, ICE Data and New York Stock Exchange. Information regarding additional trademarks and intellectual property rights of Intercontinental Exchange, Inc. and/or its affiliates is located at ice.com/terms-of-use. Other products, services, or company names mentioned herein are the property of, and may be the service mark or trademark of, their respective owners.