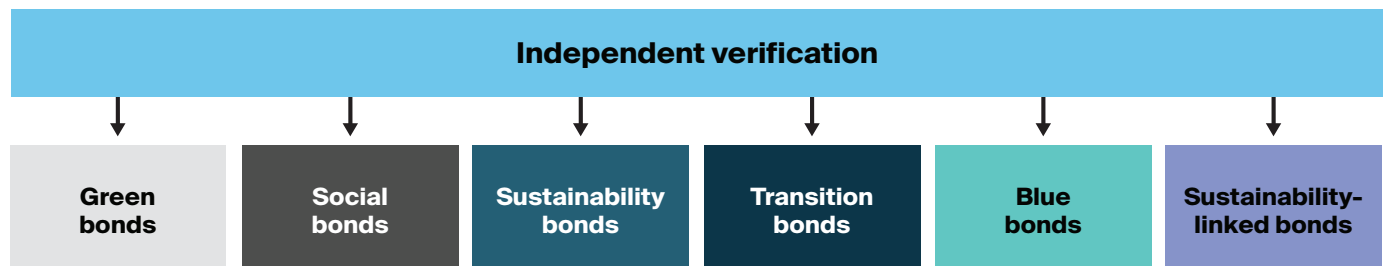


Sustainable Bond Data

Sustainable Bond issuance continues to grow as investors seek ways for their capital to contribute to sustainability goals. Investment managers are seeking ways to identify suitable products for investment that align with policies and mandates as well as solutions providing transparency into reported impacts of projects to facilitate regular, insightful reporting for clients. To bring greater transparency to this market, ICE's Sustainable Bond Classification Service offers data that aligns with industry-recognized Sustainable Bond frameworks. Clients can supplement the Classification Service data with ICE's Sustainable Bond Use of Proceeds, which provides project details, proceeds allocation reports and impact reports. The Sustainable Bond datasets can be used independently or to complement ICE's extensive reference and pricing data services which includes reference data coverage of over 35 million active and retired financial instruments.



Use cases

How customers use Sustainable Bonds data in their workflows.

Research & Security Selection

Analyze potential investment targets aligned with client mandates and internal ESG investment policies.

Whether selecting bonds for a fund or meeting client-driven impact requirements, ICE's Sustainable Bond data can help inform security selection decisions.

Portfolio or Sustainability Reporting

Granular data to identify Sustainable Bonds and the nature and assessed contributed positive real-world outcomes of the project for reporting back to stakeholders or investors.

Directly compare the overall effectiveness of individual investments (impact per \$) and overall portfolio impact¹.

Compliance

Follow the issuance through to project completion to monitor ongoing adherence to objectives or investments in pre-committed areas.

Verify applicability of sustainable label.

Identify where second party opinion² has been obtained and has validated reported details.

Origination Teams

Use features and metrics of previously Sustainable Bonds or loans as a reference for planned debt issuance programs. Identify industry best practice.

ETF Creation

Managers of ETFs tracking Sustainable Bonds indices may want to take a more active strategy in validating the use of proceeds of the bond to track their contribution to the transition. Additionally, ETF Managers may be looking to rank the constituents by perceived impact for inclusion.

Features

Coverage – extensive database covering over 14,000 corporate, sovereign, and supranational debt instruments³ and more than 24,000 municipal bonds⁴, identifying bonds independently verified as adhering to an industry recognized Sustainable Bond framework. The Sustainable Bond Classification Service provides the industry framework used by a bond issuer to structure its Sustainable Bonds along with the identification of any second party opinion⁵.

Complete and timely data – we continually monitor sources to identify new Sustainable Bond issuances and expand data attribute coverage via analysis of product documentation and reports from independent verifiers. Newly issued Sustainable Bonds are available on an intraday basis.

Use of proceeds data⁶ – additional module covering global corporate, sovereign and supranational Sustainable Bonds that provides project categorisation, proceed allocation details and impact reports. ICE's analytics dashboard additionally calculates impacts and United Nations Sustainable Development Goal alignments of individual bonds. Users can compare reported impacts across bonds and from year to year with over 7 years of history.

¹ Example of impact reporting here: https://www.gpif.go.jp/en/investment/esg/gpif_publishes_the_2023_esg_report.html

² Second Party Opinion refers to the seeking of verification by an independent third party on alignment with impact bond market guidelines.

³ Coverage as of July 2024

⁴ Coverage as of May 2024

⁵ Second Party Opinion refers to the seeking of verification by an independent third party on alignment with impact bond market guidelines

⁶ Use of proceeds data provided in collaboration with Luxembourg Stock Exchange

Project data

Detailed data points covering

- Over 100 project classifications based on use of proceeds
- Intended UN Sustainable Development Goal contributions
- Categories of projects excluded from eligibility for use of proceeds
- EU Taxonomy alignment

Allocation reports

Proceeds breakdown

- Proceeds allocated per reporting period
- Proceeds used for refinancing, CapEx and other disbursements
- Unallocated proceeds
- Independent reviewer details
- Pool of bonds definition and total volume

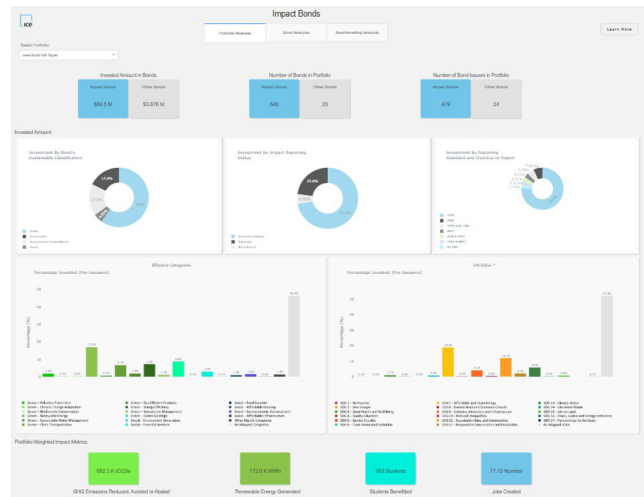
Impact reports

- Post-issuance reports including:
- Measurable impact metrics to identify project outcomes
- Impact reporting methodology (by project, country or other category)
- Contribution to SDGs
- Contributions to EU Taxonomy objectives
- Report alignment with standards and principles

Our Services

With ICE Sustainable Bond Analytics Dashboard, users can assess the environmental and social impacts funded by a selected portfolio and based on the portfolio's investment into bonds labelled as having a purpose of funding projects for sustainability objectives.

Users can identify the breakdown of an investment portfolio by Sustainable Bond type and analyze the invested amount or percentage invested of a portfolio into key metrics of a bond such as project classification, impact metric, reporting status and United Nations Sustainable Development Goals.



Delivery

Flexible data delivery formats to suit technology and workflow requirements, include XML and flat files, API, along with our user-friendly web-based user interface, Sustainable Finance Portal. The screener feature allows users to upload portfolios, search, filter, compare security attributes and link through to the issuer's ESG profile to research related sustainability factors.



For more information: ice.com/sustainable-finance-data

This document contains information that is confidential and proprietary property and/or trade secret of Intercontinental Exchange, Inc. and/or its affiliates, is not to be published, reproduced, copied, disclosed or used without the express written consent of Intercontinental Exchange, Inc. and/or its affiliates. This document is provided for informational purposes only. Some of the information described herein is still in development and as such, pursuant to Intercontinental Exchange Inc. and/or its affiliates' sole discretion, the services and/or methodologies that may ultimately be developed may deviate from the description included herein or may not be developed at all. The information contained herein is subject to change and does not constitute any form of warranty, representation, or undertaking. Nothing herein should in any way be deemed to alter the legal rights and obligations contained in agreements between Intercontinental Exchange, Inc. and/or any of its affiliates and their respective clients relating to any of the products or services described herein. Nothing herein is intended to constitute legal, tax, accounting, investment or other professional advice. Clients should consult with an attorney, tax, or accounting professional regarding any specific legal, tax, or accounting situation.

Intercontinental Exchange, Inc. and its affiliates, makes no warranties whatsoever, either express or implied, as to merchantability, fitness for a particular purpose, or any other matter. Without limiting the foregoing, Intercontinental Exchange, Inc. and its affiliates makes no representation or warranty that any data or information (including but not limited to evaluations) supplied to or by it are complete or free from errors, omissions, or defects.

Trademarks of Intercontinental Exchange, Inc. and/or its affiliates include: Intercontinental Exchange, ICE, ICE block design, NYSE, ICE Data Services, ICE Data and New York Stock Exchange. Information regarding additional trademarks and intellectual property rights of Intercontinental Exchange, Inc. and/or its affiliates is located at ice.com/terms-of-use. Other products, services, or company names mentioned herein are the property of, and may be the service mark or trademark of, their respective owners.