

## Quickly Navigate Between Preferred Market Views

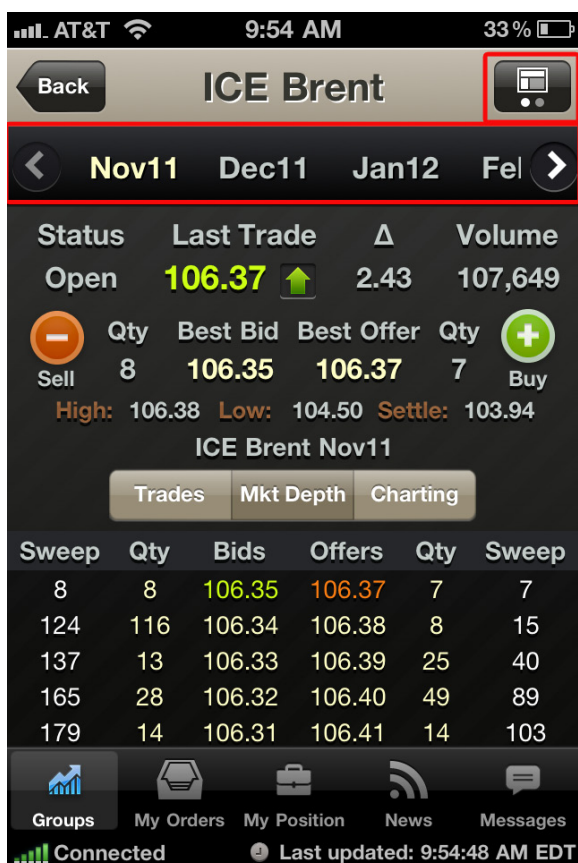
ICE mobile Tips provide information on helpful features available on ICE mobile. For more information on the real-time trading and risk management functionality of ICE mobile, please visit [theice.com/mobile](http://theice.com/mobile).

### Preferred Market Views

ICE mobile offers a complete market picture by allowing users to quickly navigate between preferred market views via a single touch of the Monitor Icon or Column Headers, or by simply rotating your device to landscape mode.

### Toggle Between Trading Periods and Commodities Views

Once you've selected a commodity from your Group List, a default view of Trading Periods for the selected commodity is displayed in the Select/Scroll area as shown below. Rotating your device to landscape mode automatically transforms the data for the selected Trading Period into a full screen chart display.



Portrait View

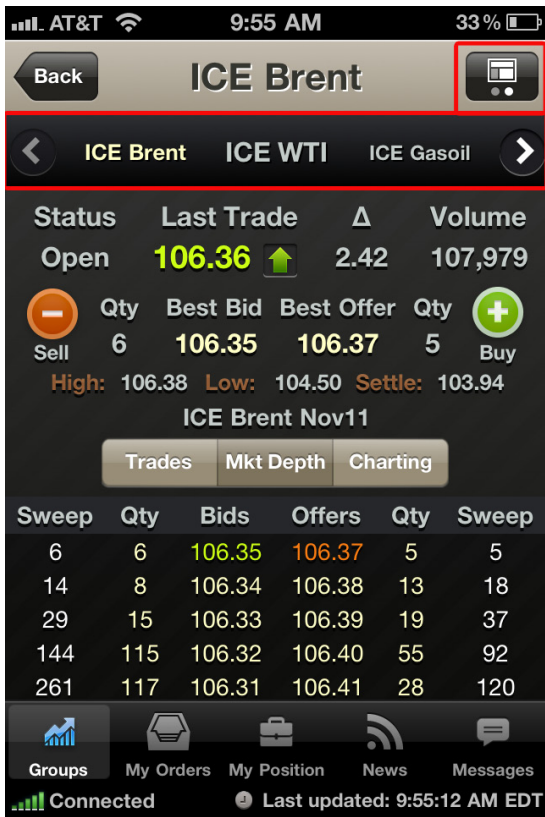
Monitor Icon

Trading Periods View in Select/Scroll Area



Landscape View

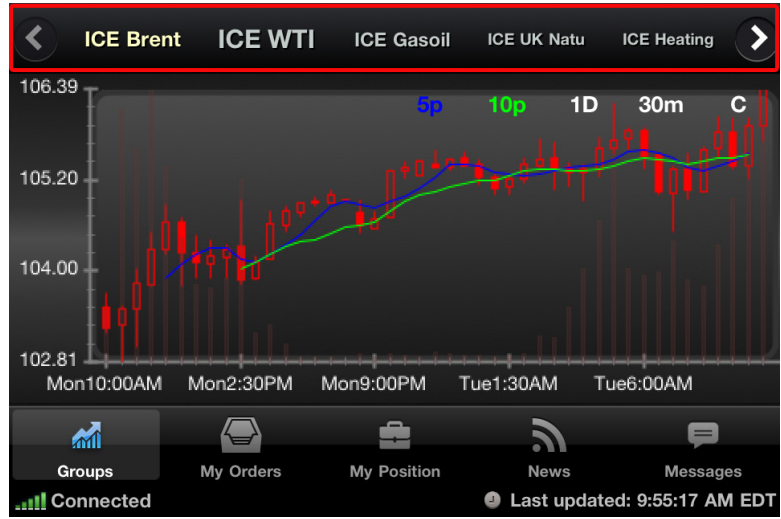
A single touch of the Monitor Icon changes the display in the select/scroll area from Trading Periods to a list of Commodities within your selected group. You can then navigate from one commodity to the next within the Select/Scroll area. Rotating your device to landscape mode automatically transforms the data for the selected commodity into a full screen chart display.



Portrait View

Monitor Icon

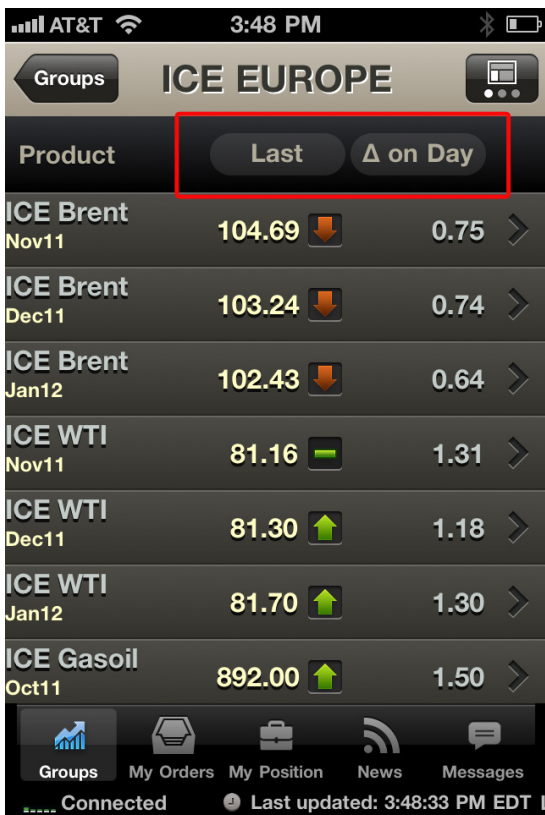
Commodities View in Select/Scroll Area



Landscape View

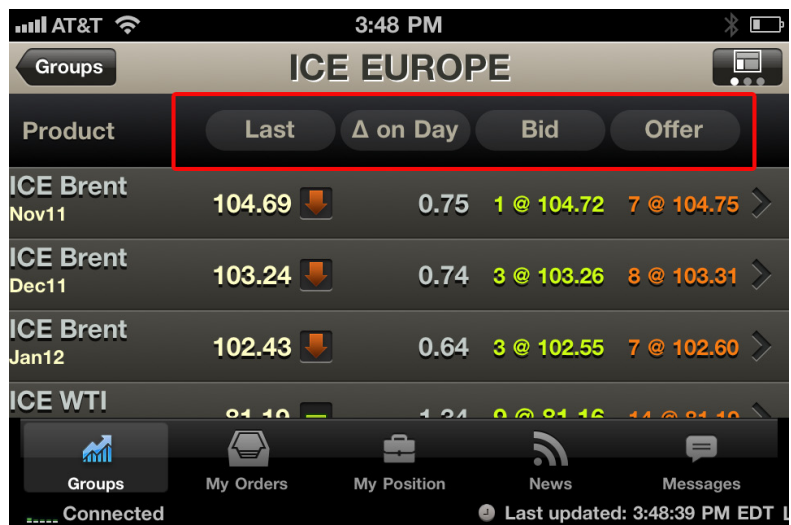
### Select/Expand Column Views

Once a Group is selected from your Group List, the information displayed for each commodity within that Group defaults to Last and Change on Day as shown below. Tapping these buttons allows you to scroll between Last, Change on Day, Bid, Offer, High/Low, High, Low, My Bids, My Offers, Volume, Settle, My Buys and My Sells. Rotating your device to landscape mode expands your view from two to four columns.



Portrait View

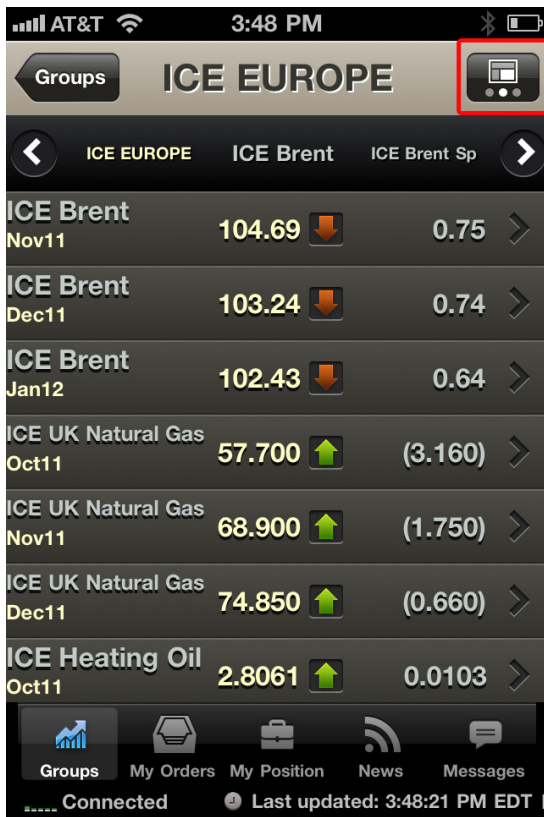
Column Headers



Landscape View

## Expanding the Data Display View

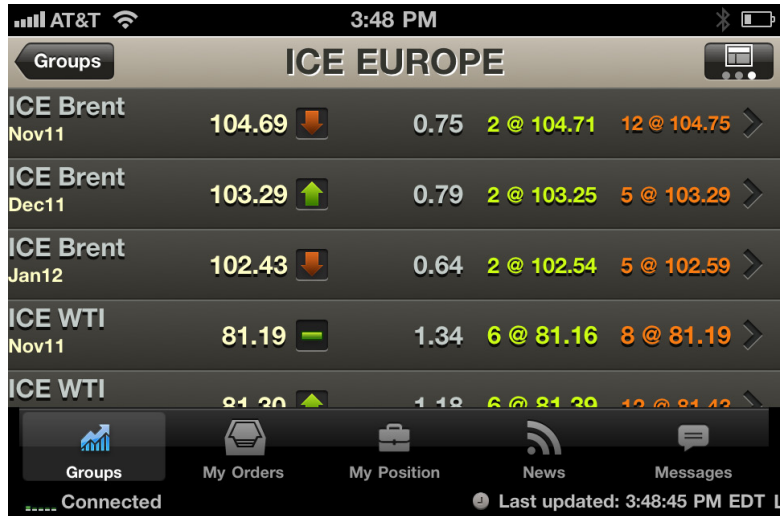
Tapping the Monitor Icon again will hide both the Column Select and Select/Scroll displays, allowing you to view the maximum amount of available data. Tapping the Monitor Icon again will cycle back through the three available options.



Portrait View

Monitor Icon

Expanded View Data



Landscape View

## Tell us what you think.

New features for ICE mobile are already in development, however we expect many improvements will be inspired by your ideas.

[Give us your feedback](#)

## For more information.

E-mail: [icemobile@theice.com](mailto:icemobile@theice.com)  
Call: +1 770 738 2101 (Option 1, 1)  
Visit: [theice.com/mobile](http://theice.com/mobile)

[Request a demo](#)

