

# ICE Connect

## Energy Transition Package

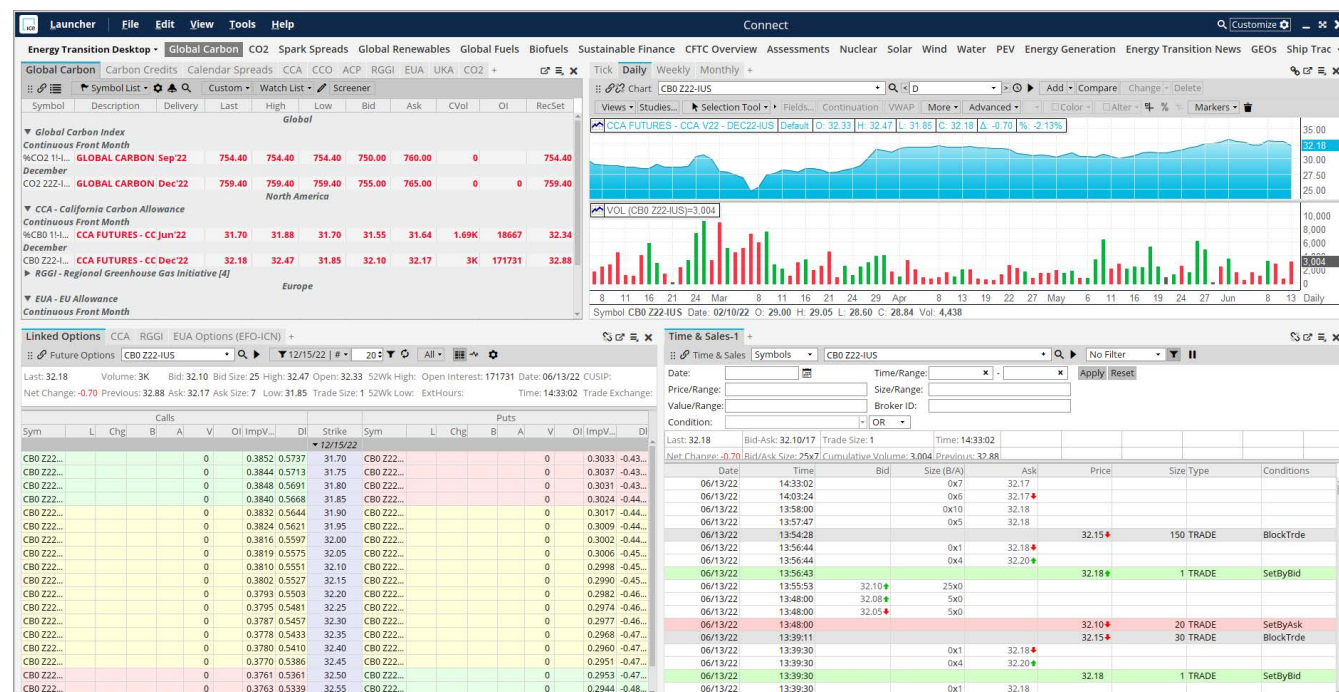
A sharper focus on sustainability means institutions and finance professionals are looking beyond traditional analysis to assess risks and opportunities, and are factoring in environmental, social and governance (ESG) issues into their decision-making.

ICE has been a leader in environmental markets for nearly two decades with the equivalent of more than 50% of the world's total annual emissions footprint and nearly 95% of all globally traded environmental futures and options trading on ICE exchanges.

The ICE Connect Energy Transition Package brings together a range of trading tools with real-time data, pricing, messaging, news, fundamental data and analytics for market participants charting a path to Net Zero.

## Market data & global news

- Real-time exchange data from 180+ global exchanges
- Access to ICE proprietary exchange data (S2F)
- FX spot and forward data
- News from several leading third-party news sources including Dataminr, Dow Jones and MT Newswire
- Cash price data from all major price reporting agencies covering energy, carbon, renewables, credits, offsets and biofuels



ICE Connect: Energy Transition Package





## Specialized content

- Global carbon data including:
    - CCA / RGGI / EUA / UKA futures and options
    - California Carbon Offset futures
    - ICE Global Carbon Index futures
    - CCA / EUA / UKA primary auction data
    - Commitment of Traders Reports for CCA / RGGI / EUA / UKA
    - CCA / RGGI / EUA / UKA market fundamentals
  - Voluntary carbon data including ICE's Nature Based Solutions carbon credit futures
  - Sustainable finance data including ICE's ESG and green bond indices
  - Global renewables coverage including:
    - US Compliance REC and SREC futures and options
    - US Voluntary REC and SREC futures
    - US REC market fundamentals
    - Guarantees of Origin assessment pricing
    - Supply and demand fundamentals
    - Renewable generation data
  - Global fuels including US RINs, CA LCFS futures & Global Biofuel futures
- 



## Mobile & personalized

- Stay connected from a phone or tablet with ICE Mobile
  - Preferences, customized screens, and entitlements
- 



## Powerful data visualization & analysis

- Advanced data visualization and statistical analysis with deep historical data formula support and 90+ indicators
- Excel and Python add-ins designed for the commodities markets



**For more information:** [ice.com/ice-connect/sustainability](https://ice.com/ice-connect/sustainability) | [sales-tradingsolutions@ice.com](mailto:sales-tradingsolutions@ice.com)

The following are trademarks of Intercontinental Exchange, Inc. and/or its affiliated companies: Intercontinental Exchange, ICE, New York Stock Exchange and NYSE. For more information regarding trademarks owned by Intercontinental Exchange, Inc. and/or its affiliated companies see [ice.com/terms-of-use](https://ice.com/terms-of-use).